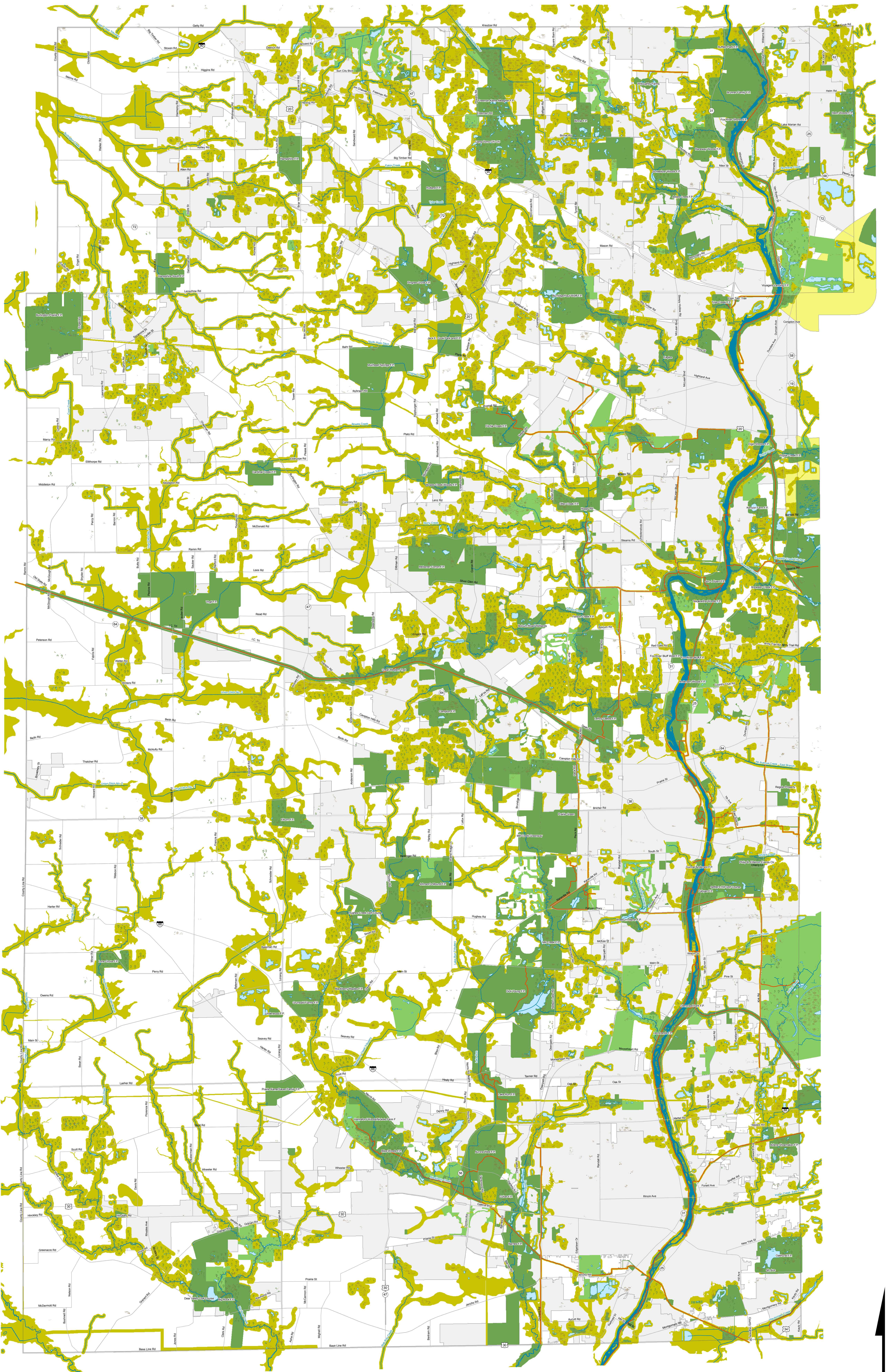


KANE COUNTY 2040 GREEN INFRASTRUCTURE MAP



Parks, Preserves & Conservation Areas (with buffer)
 Private Open Space (with buffer)

Environmental Resource Area (with buffer)

ADID Wetland

Remnant Oak Woodland (2011)

Class III Groundwater Area

Regional Trail



1 inch = 3/4 mile
 Kane County Development and Community Services Department
 TJM - 12/13