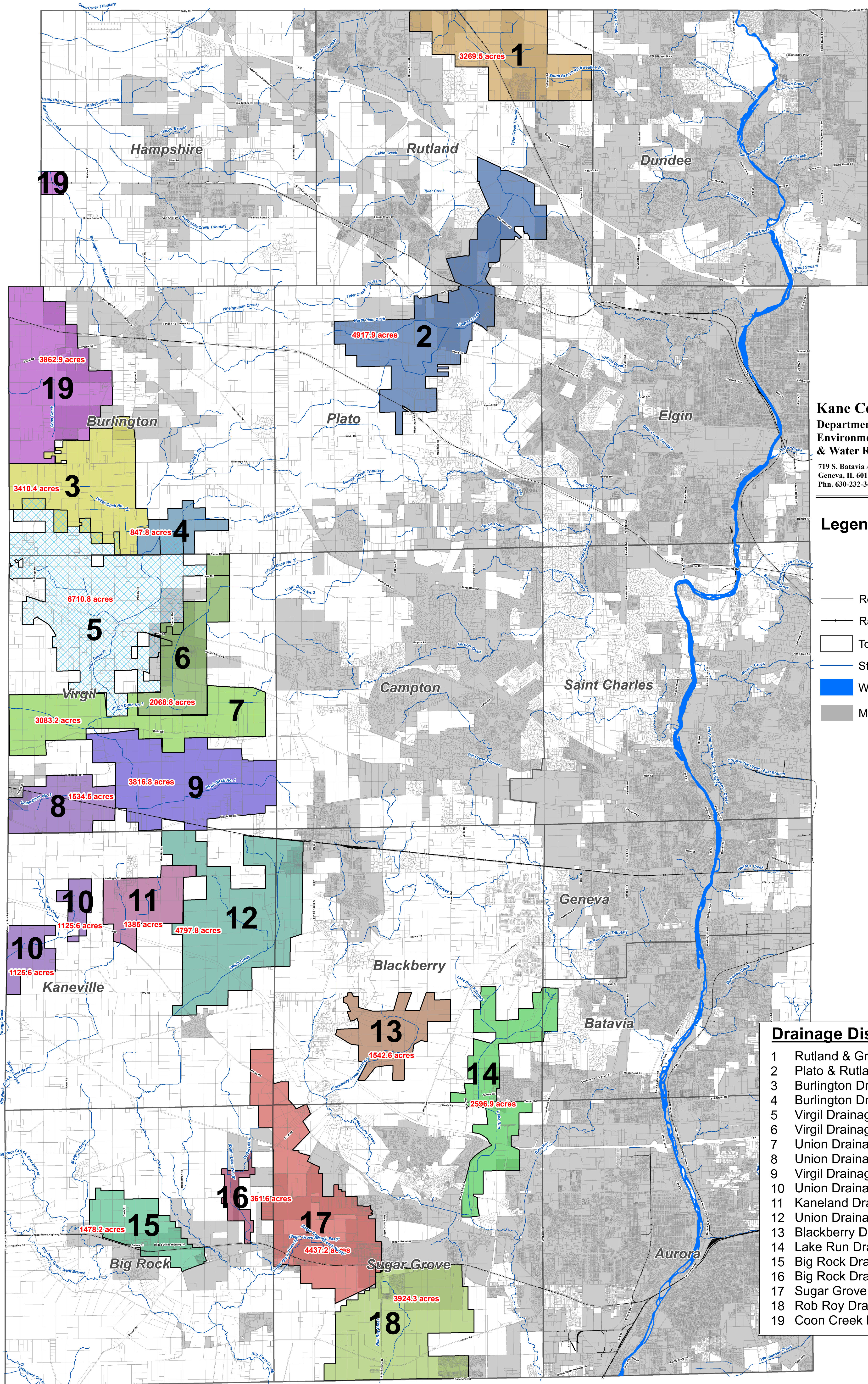


# Map of Kane County, Illinois Drainage Districts



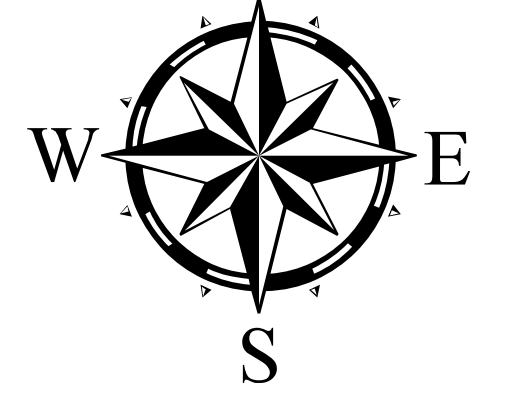
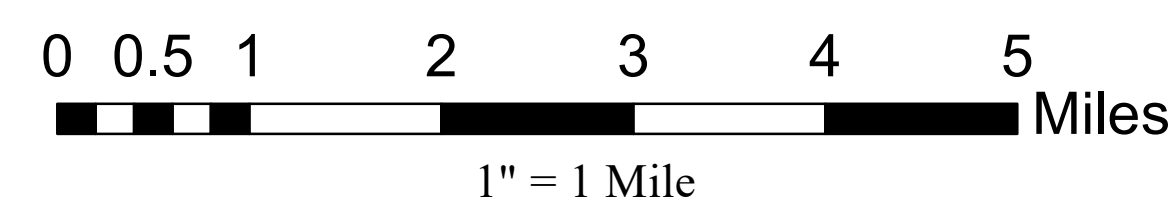
**Kane County**  
 Department of  
 Environmental  
 & Water Resources  
 719 S. Batavia Avenue  
 Geneva, IL 60134  
 Phn. 630-232-3497



### Legend

- Roads
- Railroads
- Townships
- Streams
- Water
- Municipalities

Drainage District Key	
1	Rutland & Grafton Drainage District
2	Plato & Rutland Drainage District
3	Burlington Drainage District #1
4	Burlington Drainage District #2
5	Virgil Drainage District #3
6	Virgil Drainage District #2
7	Union Drainage District #3
8	Union Drainage District #2
9	Virgil Drainage District #1
10	Union Drainage District #2
11	Kaneland Drainage District #1
12	Union Drainage District #1
13	Blackberry Drainage District #1
14	Lake Run Drainage District
15	Big Rock Drainage District
16	Big Rock Drainage District #2
17	Sugar Grove Drainage District
18	Rob Roy Drainage District
19	Coon Creek Drainage District #1



# Kane County Drainage Districts

## Contact Information

Updated June 20, 2019

Map ID	District Name	Contact Information
1	RUTLAND AND GRAFTON DRAINAGE DISTRICT	Contact Kane County Environmental & Water Resources
2	PLATO AND RUTLAND DRAINAGE DISTRICT NO. 1	Contact Kane County Environmental & Water Resources
3	BURLINGTON DRAINAGE DISTRICT NO. 1	Contact Kane County Environmental & Water Resources
4	BURLINGTON DRAINAGE DISTRICT NO. 2	Contact Kane County Environmental & Water Resources
5	VIRGIL DRAINAGE DISTRICT NO. 3	PO Box 748, St Charles, IL 60174
6	VIRGIL DRAINAGE DISTRICT NO. 2	Contact Kane County Environmental & Water Resources
7	UNION DRAINAGE DISTRICT NO. 3	Contact Kane County Environmental & Water Resources
8	UNION DRAINAGE DISTRICT NO. 2	Contact Kane County Environmental & Water Resources
9	VIRGIL DRAINAGE DISTRICT NO. 1	PO Box 295, Maple Park, IL 60151
10	UNION DRAINAGE DISTRICT NO. 2	Contact Kane County Environmental & Water Resources
11	KANELAND DRAINAGE DISTRICT NO. 1	Contact Kane County Environmental & Water Resources
12	UNION DRAINAGE DISTRICT NO. 1	Contact Kane County Environmental & Water Resources
13	BLACKBERRY DRAINAGE DISTRICT NO. 1	Contact Kane County Environmental & Water Resources
14	LAKE RUN DRAINAGE DISTRICT	Contact Kane County Environmental & Water Resources
15	BIG ROCK DRAINAGE DISTRICT	Contact Kane County Environmental & Water Resources
16	BIG ROCK DRAINAGE DISTRICT NO 2	Contact Kane County Environmental & Water Resources
17	SUGAR GROVE DRAINAGE DISTRICT	Contact Kane County Environmental & Water Resources
18	ROB ROY DRAINAGE DISTRICT	Contact Kane County Environmental & Water Resources
19	COON CREEK DRAINAGE DISTRICT NO. 1	Contact Kane County Environmental & Water Resources