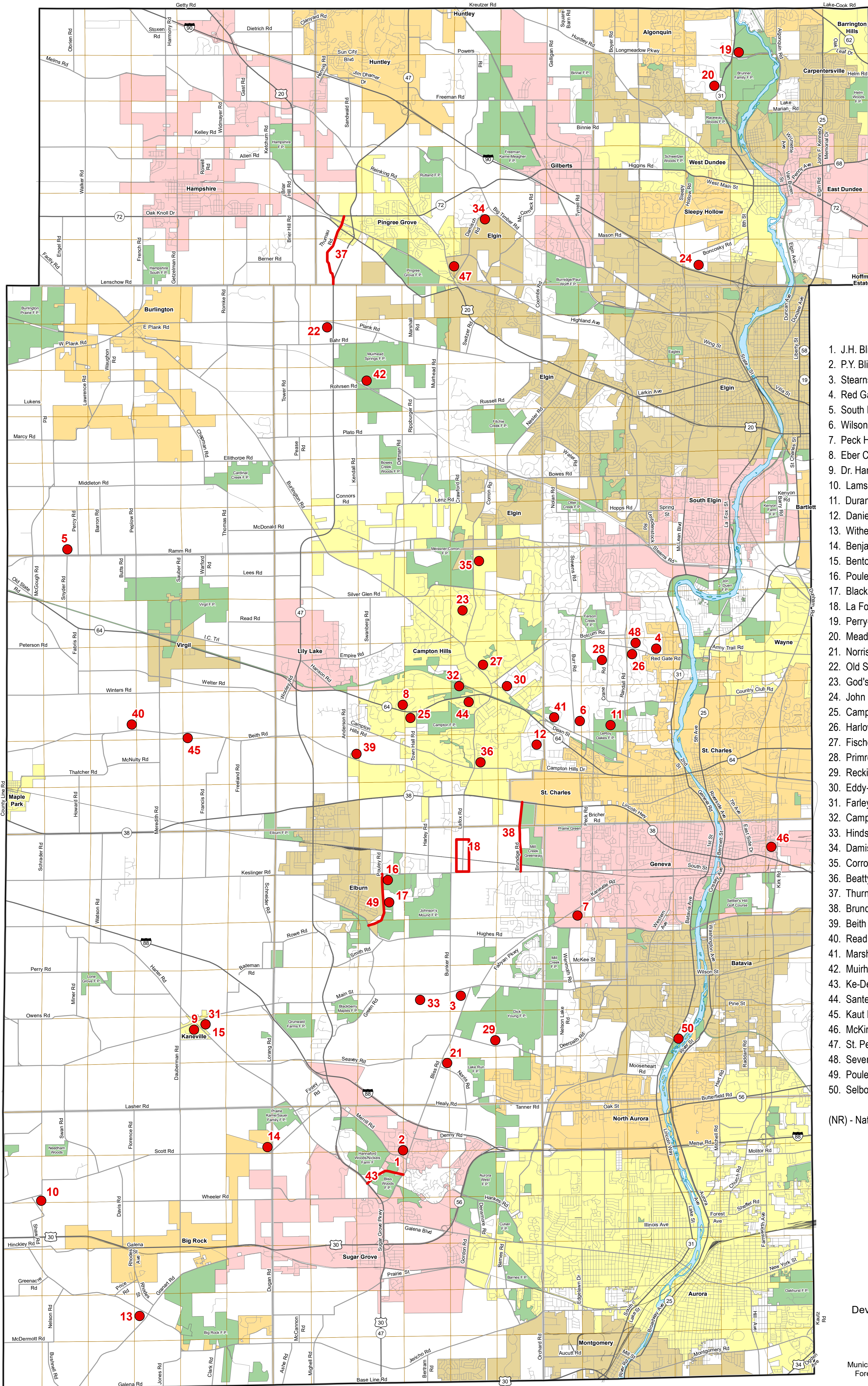


# THE KANE COUNTY REGISTER OF HISTORIC PLACES (1988 - 2020)



1. J.H. Bliss Homestead
2. P.Y. Bliss Homestead
3. Stearns-Wadsworth House (NR)
4. Red Gate Farm
5. South Burlington Community House
6. Wilson Homestead
7. Peck Homestead
8. Eber Chaffee Farmstead
9. Dr. Hardy's Office
10. Lamson Homestead
11. Durant-Peterson House (NR)
12. Daniel Lincoln Homestead
13. Withered Oaks
14. Benjamin George House
15. Benton Homestead
16. Pouley Estate
17. Blackberry Creek Farm
18. La Fox Historic District
19. Perry-Lathrop Homestead
20. Meadowdale Country School
21. Norris House
22. Old St. Peter's Church Building
23. God's Little Acre Cemetery
24. John Schmidtke House
25. Campton Town Hall (NR)
26. Harlow Hooker Homestead
27. Fischer Homestead
28. Primrose Farm
29. Reckinger Farm
30. Eddy-Swanson Farmstead
31. Farley House
32. Campton Community Center
33. Hinds Farmstead
34. Danisch Farm (NR)
35. Corron Farm (NR)
36. Beatty Homestead - Mongerson Farm
37. Thurnau Road (Rustic Road)
38. Brundige Road (Rustic Road)
39. Beith House
40. Read House
41. Marshall House
42. Muirhead Farmhouse (NR)
43. Ke-De-Ka Road (Rustic Road)
44. Santell Prairie Home
45. Kaut House
46. McKinley-Adams House
47. St. Peter's Evangelical Lutheran Church
48. Seven Oaks Farm
49. Pouley Road (Rustic Road)
50. Selborne

(NR) - National Register of Historic Places



1 inch = 1 mile

Kane County  
Development and Community  
Services Department  
TJM - 3/20

Municipal Boundaries current thru 2-29-20.  
Forest Preserves current thru 2-29-20.