

Illinois Environmental Protection Agency  
**ANNUAL FACILITY INSPECTION REPORT**  
 for NPDES Permit for Storm Water Discharges  
 from Municipal Separate Storm Sewer Systems (MS4)

**Kane County, Illinois (NPDES Permit No. ILR400259)**  
**YEAR 6: *March 1, 2021 - February 28, 2022***

**I. CHANGES TO BEST MANAGEMENT PRACTICES**

There are no changes to the Best Management Practices for the six minimum control measures as described in the Notice of Intent for Kane County submitted on May 27, 2016.

**II. STATUS OF COMPLIANCE WITH PERMIT CONDITIONS**

Kane County submitted a Notice of Intent on May 27, 2016, which initiated a new 5-year permit cycle. The BMPs listed in the 2016 Notice of Intent were selected to meet NPDES Phase II program requirements and minimize nonpoint source pollution in Kane County, Illinois.

The implementation progress for each of these BMPs is summarized below in sections A—F. All BMPs described in Kane County’s 2016 Notice of Intent have been implemented on or ahead of schedule, with the exception of select items noted in their descriptions below.

**A. PUBLIC EDUCATION AND OUTREACH**

**1. BMP A.1—Distributed Paper Material**

<b>MEASURABLE GOALS</b>	Include “Water Wise Corner” in the <i>Kane County Recycles Green Guide</i> , which is developed and distributed throughout Kane County on an annual basis. Revise “Water Wise Corner” every spring. Track the total number of recipients each year.
<b>RESULTS</b>	<p>The “Clean Water for Kane” section was included in the <i>Kane County Recycles Green Guide</i> for 2021, which was distributed to 26,300 residents countywide via 18,000 print copies and 8,300 digital downloads of the document from the Kane County website. Printed copies of the <i>Green Guide</i> were also distributed at multiple community events (see A.4 Community Event).</p> <p>The “Clean Water for Kane” section was included in the Kane County Recycles Green Guide for 2021, which was distributed to 18,000 residents countywide via printed and electronic copies. Printed copies of the Green Guide are traditionally distributed at community events, however, due to the COVID-19 pandemic, many community events were cancelled or held virtually.</p>

**USE LESS. USE WISELY.**

**ENERGY & SUSTAINABILITY**

- Use **ENERGY STAR** rated appliances to conserve energy.
- **Stop idling** your vehicle: Idling wastes fuel and money, and contributes to air pollution. If schools are interested in getting "Please Don't Idle" signs for your drop-off and pick up areas, please reach out to the resource management coordinator at the contacts below.
- Look into your energy provider's **energy efficiency programs and opportunities** to use renewable energy.
- Check out <https://www.countyofkane.org/sustainability/Pages/solar.aspx> for updates on local **residential solar opportunities**.
- **Bike, walk or use public transportation** when possible.
- **Move toward reusables and avoid single-use plastics.**
- **Utilize organics** by composting food and lawn scraps.
- **Purchase consciously:** think about the lifecycle of each purchase you make.



**WATER**

- **Use WaterSense:** Help conserve our drinking water by using WaterSense rated fixtures to reduce water use in your faucets, toilets, shower heads and irrigation systems.
- **Water wisely:** Water lawns deeply and infrequently to encourage deep root growth. Ideally, your lawn only needs 1 inch of water per week.
- **Install a rain barrel and rain garden:** This conserves potable water and replenishes groundwater supplies.
- **Salt sensibly:** Excessive road salt during winter months can harm our rivers and streams. Shovel first, then apply salt sparingly, one cup is enough for your entire driveway.
- **Protect:** Only rain down the storm drain. Keep household chemicals, cleaners and lawn chemicals (pesticides, herbicides and fertilizers) from being dumped into or washed down storm drains.



**Contact:** Resource Management Coordinator, at [Kleelvy@co.kane.il.us](mailto:Kleelvy@co.kane.il.us) or **630-208-8665**.  
For more sustainability information, please visit [www.countyofkane.org/sustainability](http://www.countyofkane.org/sustainability).

**RECYCLING PLASTIC BAGS AND PLASTIC FILM**

Please do not place plastic bags or film in your household recycling! They are recyclable but only at grocery store drop-boxes. Check your local store for their drop-box and to verify acceptable materials. Please visit [www.plasticfilmrecycling.org](http://www.plasticfilmrecycling.org) for more information.

**ACCEPTED MATERIALS:**

- All clean, clear bread bags labeled with a #2 or #4
- Bubble wrap (clean and free of tape)
- Grocery bags
- Plastic dry cleaning bags
- Plastic newspaper bags
- Plastic mailers (with the "how2recycle" label)
- Paper towel and toilet paper plastic wrap
- Retail bags (hard plastic and string handles removed)
- Zip-lock bags (clean, dry, empty bags only & cut the zip strip off and throw it in the trash)



**DO NOT RECYCLE:**

- The following are considered contaminants and could jeopardize recycling programs:
- NO receipts, deli stickers, or cling wrap
  - NO frozen food bags
  - NO film that has been painted or has excessive glue
  - NO bio-based or compostable plastic bags
  - NO random plastic that is not specifically listed on the Accepted Materials list



**COMPOST BINS & RAIN BARRELS**

Will be available at Kane County's Spring Sale! More details in early 2022 at [countyofkane.org](http://countyofkane.org) on the Division of Environmental and Water Resources webpage.  
**Questions? Call 630-208-8665**

This Guide is printed on 100% post-consumer recycled content paper.

*Clean Water for Kane section of the Kane County Recycles Green Guide for 2020-2021*


**2. BMP A.2—Speaking Engagement**

**MEASURABLE GOALS**

Provide educational presentations related to stormwater management on a regular basis through involvement in local watershed groups and other environmental committees, ensuring that a minimum of one public presentation is given per year. Track the number of speaking engagements, locations, topics

	presented, and number of attendees at each engagement.
<b>RESULTS</b>	<p>The presentations listed below were given by Kane County staff during the permit year of March 1, 2021 — February 28, 2022:</p> <ul style="list-style-type: none"> <li>• Presentation to Kane County Energy &amp; Environment on Fox River Study Group Water Quality Study and Impacts of Dams on the Fox River; <i>via Zoom (03/12/2021; 15 attendees; video published on-line)</i></li> <li>• Presentation to Fox River Ecosystem Partnership on NPDES Programs for Local MS4s; <i>via Zoom (01/12/22; 20 attendees)</i></li> <li>• December 28, 2021, Presentation on Resiliency in Building for Kane County Development Department and Environmental and Water Resources Staff, with a viewing of the documentary “Last House Standing”</li> </ul>

### 3. BMP A.3—Public Service Announcement

<b>MEASURABLE GOALS</b>	<p>A public service announcement for the “Clean Water for Kane” campaign was developed in 2014, and is made available to the community through the Kane County website, special showings, and other digital media outlets.</p> <p>Track the number of PSA showings, locations, and audience reached each year.</p>
<b>RESULTS</b>	<p>During the permit year, the PSA was posted on the Kane County website at: <a href="http://www.countyofkane.org/Pages/commDisp.aspx?focusID=145">http://www.countyofkane.org/Pages/commDisp.aspx?focusID=145</a>. No special showings of the PSA were organized by Kane County due to a lack of funding.</p>  <p>PSA on Kane County website</p>

**4. BMP A.4—Community Event**

<p><b>MEASURABLE GOALS</b></p>	<p>Educate residents and other stakeholder groups on stormwater Best Management Practices through participation in environmental and watershed special events in the community, and regular community education/training events including the annual well and septic seminar hosted by the Kane County Health Department. Coordinate a minimum of one public educational workshop per year and participate in other community outreach events. Track the number of events, locations, information distributed, and number of participants for each event.</p>
<p><b>RESULTS</b></p>	<p>Kane County staff participated in the community events listed below during the permit year of March 1, 2021 - February 29, 2022. Stormwater educational handouts—including <i>Green Guides</i> (see A.1 Distributed Paper Material), homeowner resource cards, and natural landscaping brochures—were distributed at these community events.</p> <p>Kane County staff participated in the community events listed below during the permit year of March 1, 2021 – February 29, 2022. Some community events were shifted online to “virtual events” due to the COVID-19 pandemic or cancelled due to lack of resources and time to transition events online. Stormwater educational handouts – including the Green Guides (see A.1 Distributed Paper Material) were distributed at the community events held in person, virtual links to the <i>Clean Water for Kane</i> website - which hosts all Kane County stormwater educational materials for the public (see A.6 Other Public Education) - were made available for virtual events.</p> <ul style="list-style-type: none"> <li>• One Earth Film Festival [3/13/2021, 400+ registrants]</li> <li>• Fox Valley Sustainability Equity and Sustainability in the Fox Valley (flood mitigation) [4/30/21]</li> <li>• Kane County Rain Barrel Sale Webinar [4/26/2021, 38 attendees]</li> </ul> <p>The Kane County Health Department did not host its annual Well &amp; Septic educational events for the public due to the COVID-19 pandemic.</p>

**5. BMP A.5—Classroom Education Material**

<p><b>MEASURABLE GOALS</b></p>	<p>Maintain a collection of stormwater-related educational materials for use in the classroom, and also reach students in the community through educational displays at libraries and other community venues. Update the classroom educational material database on an annual basis. Track the number of educational displays, locations, materials distributed, and number of students reached throughout the year.</p>
--------------------------------	--

<b>RESULTS</b>	<p>During the permit year, the Kane County Department of Environmental &amp; Water Resources updated the youth educational resource list available on the County website at: <a href="http://www.countyofkane.org/FDER/Pages/EnvironmentalResources/stormwaterEducation/children.aspx">www.countyofkane.org/FDER/Pages/EnvironmentalResources/stormwaterEducation/children.aspx</a>.</p> <p>Additionally, the Department provided educational materials—including water conservation coloring books and stickers, <i>Clean Water for Kane</i> rain gages, toilet leak detection tabs, pet waste tip cards, and outdoor water use brochures—to partner organizations, particularly the Forest Preserve District of Kane County and Friends of the Fox River for the Schweitzer Environmental Center.</p> <p>During the permit year, the Kane County Department of Environmental and Water Resources updated the youth educational resource list available on the county website:  <a href="https://www.countyofkane.org/FDER/Pages/environmentalResources/waterResources/children.aspx">https://www.countyofkane.org/FDER/Pages/environmentalResources/waterResources/children.aspx</a> as well as the teacher educational resource list available on the county website:  <a href="https://www.countyofkane.org/FDER/Pages/environmentalResources/waterResources/teachers.aspx">https://www.countyofkane.org/FDER/Pages/environmentalResources/waterResources/teachers.aspx</a></p> <p>Additionally, Kane County Department of Environmental and Water Resources allocated \$500 of FY21 funding to Friends of the Fox River (FOFR) for their Classroom Educational Programming and pledges funding for FY22.</p> <p>Friends of the Fox River hosted classroom education programming for City of Elgin in the form of in-stream 10 education experiences (240 students), 7 classroom watershed education sessions (165 students) and 5 virtual watershed education lessons (80 students). For all of Kane County, Friends of the Fox River organized student education through field trips, campus lessons, virtual programs and public events with different schools and student groups having an overall reach during the reporting year of 2500 students.</p>
----------------	--

**6. BMP A.6 – Other Public Education**

<b>MEASURABLE GOALS</b>	<p>The Kane County Department of Environmental &amp; Water Resources maintains a “Clean Water for Kane” website, and also develops seasonal stormwater-related informational articles that are distributed through the <i>Kane County Connects</i> e-newsletter, website, and social media pages. Update the “Clean Water for Kane” web pages on an annual basis. Track the number of stormwater-related articles in <i>Kane County Connects</i>, topics covered, and audience reach each year.</p>
<b>RESULTS</b>	<p>During the permit year, the Kane County Department of Environmental &amp; Water Resources updated the “Stormwater Education” pages on the County website.</p>

## Stormwater Education

---



Stormwater Education page of the Kane County website:  
[www.countyofkane.org/FDER/Pages/EnvironmentalResources/  
stormwaterEducation.aspx](http://www.countyofkane.org/FDER/Pages/EnvironmentalResources/stormwaterEducation.aspx)

In addition, eight water-related articles were published in *Kane County Connects*:

- *Fabrizius, Konen, Quinn Re-Elected to Soil & Water District Board* [2/15/22] <https://kanecountyconnects.com/2022/02/fabrizius-konen-quinn-re-elected-to-soil-water-district-board/>
- *Soil & Water District Opens Trees, Shrubs and Native Plant Sale* [2/8/22] <https://kanecountyconnects.com/2022/02/soil-water-district-opens-trees-shrubs-and-native-plant-sale/>
- *Kane-Dupage Soil and Water Conservation District Seeks Nominating Petitions for Director* [12/9/21] <https://kanecountyconnects.com/2021/12/kane-dupage-soil-and-water-conservation-district-seeks-nominating-petitions-for-director/>
- *To Water or not to Water? Drought Heats Up Classic Debate Over Summer Lawn Care* [6/8/21] <https://kanecountyconnects.com/2021/06/to-water-or-not-to-water-drought-heats-up-classic-debate-over-summer-lawn-care/>
- *\$605,300 In Rebuild Illinois Capital Funding Awarded to the City of St. Charles to Address Stormwater Runoff* [4/16/21] <https://kanecountyconnects.com/2021/04/605300-in-rebuild-illinois-capital-funding-awarded-to-the-city-of-st-charles-to-address-stormwater-runoff/>
- *Countdown to Earth Day: What You Can Do To Stop Stormwater Runoff, Water Pollution (Plus: A Fun Experiment!)* [4/13/21] <https://kanecountyconnects.com/2021/04/countdown-to-earth-day-what-you-can-do-to-stop-stormwater-runoff-water-pollution-plus-a-fun-experiment/>
- *Countdown to Earth Day: How to Conserve Water – Even in a 1960s Home* [4/6/21] <https://kanecountyconnects.com/2021/04/countdown-to-earth-day-how-to-conserve-water-even-in-a-1960s-home/>
- *1 Inch of Water = \$25,000 Damage – Here’s How Kane Residents Can Get FEMA Flood Insurance* [3/11/21] <https://kanecountyconnects.com/2021/03/1-inch-of-water-25000->

	<p style="text-align: center;"><a href="#">damage-heres-how-kane-residents-can-get-fema-flood-insurance/</a></p> <p><i>Kane County Connects</i> reaches 11,829 newsletter subscribers and over 7,372 followers on social media.</p>
--	---

**7. BMP A.6 – Other Public Education**

<b>MEASURABLE GOALS</b>	The Kane County Department of Environmental & Water Resources maintains a supply of “Kane County Streams” signs to be installed at road crossings throughout the County. Kane County will provide the signs to MS4 communities as requested for installation within their own municipal boundaries, and will maintain a database of signs manufactured and installed throughout the year.
<b>RESULTS</b>	During the permit year, Kane County provided no additional stream signs to communities. In Unincorporated Kane County, Jelkes Creek Watershed Group installed 8 total stream signs that were provided by Kane County during the last permit year, along new roadways.

**B. PUBLIC PARTICIPATION/INVOLVEMENT**

**1. BMP B.3—Stakeholder Meeting**

<b>MEASURABLE GOALS</b>	Kane County is involved in watershed planning and management efforts that seek input from a variety of watershed stakeholders. Provide notice of stakeholder meetings on the Kane County website and distribute meeting information to stakeholder email lists. Track the number of watershed meetings hosted or co-hosted by the County, meeting locations, topics discussed, and participation numbers.
<b>RESULTS</b>	<p>During the permit year, the following stakeholder meetings were held by Kane County:</p> <ul style="list-style-type: none"> <li>• Tyler Creek Watershed Coalition meetings – [3/17/21 via Zoom, 5/19/21, via Zoom; 7/21/21 field tour at Pingree Grove WWTP; 8/18/21 via Zoom,11/17/21 via Zoom,12/15/21 via Zoom; 01/19/22 via Zoom]</li> <li>• Indian Creek Watershed Plan Steering Committee – meetings held virtually due to COVID-19; [5/14/21]</li> <li>• Little Rock Watershed Plan Meeting – [6/30/21 via Zoom]</li> </ul>

**2. BMP B.5—Volunteer Monitoring**

<p><b>MEASURABLE GOALS</b></p>	<p>Kane County continues to take a multi-level approach to supporting stream monitoring efforts by holding a leadership role in watershed groups carrying out monitoring work, as well as by providing financial support for local volunteer monitoring programs and river monitoring via USGS stream gages. Maintain Joint Funding Agreement with USGS and allocate funding for stream gages. Support local volunteer monitoring program. Track the number of leadership meetings attended and the funding provided on an annual basis.</p>
<p><b>RESULTS</b></p>	<p>Kane County staff served on the Board of Directors of the Fox River Study Group and as an advisor to the Fox River Ecosystem Partnership, attending the following meetings during the permit year:</p> <ul style="list-style-type: none"> <li>• Fox River Study Group meetings held via Zoom due to COVID-19 [3/25/21, 4/22/21; 5/27/21, 6/18/21-modelling subcommittee mtg, 6/24/21, 7/21/21-modelling subcommittee mtg, 7/22/21, 8/5/21, 9/23/21, 10/28/21, 11/2/21, 11/30/21 with IEPA,12/16/21, 01/27/22, 2/24/22]</li> <li>• Fox River Ecosystem Partnership meetings held via Zoom due to COVID-19 [5/12/21 via Zoom, 6/9/21 in person @ Crystal Lake, 7/28/21, 8/11/21 in person McHenry Twp, 9/8/21, 10/13/21 in person @ Carpentersville; 1/10/21 via Zoom, 01/12/22 via Zoom, 2/9/22 via Zoom.</li> </ul> <p>In addition, the Kane County Department of Environmental &amp; Water Resources provided financial support of \$500 to the Friends of the Fox River for their volunteer monitoring program in November 2021. Friends of the Fox River organized monthly creek sampling at Tyler, Otter and Ferson Creeks.</p> <p>A Joint Funding Agreement between Kane County and the U.S. Geological Survey was signed on 10/21/2021 and passed by Kane County Board on 10/12/2021 to cover the time period through September 30, 2022. Kane County has committed \$61,760 of FY22 funding to support five stream gages and four precipitation gages.</p>

**3. BMP B.7—Other Public Involvement**

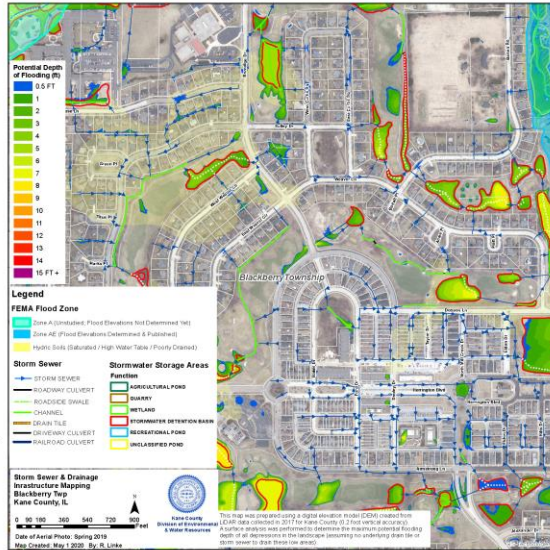
<p><b>MEASURABLE GOALS</b></p>	<p>Kane County will provide technical and financial support to the Friends of the Fox River and other local watershed groups to ensure that opportunities exist for public involvement in stream cleanup efforts. Allocate funding to support stream cleanups on an annual basis. Track the number of planning meetings or cleanup events attended by Kane County staff each year. (Gary Swick – reached out)</p>
<p><b>RESULTS</b></p>	<p>The Kane County Department of Environmental &amp; Water Resources provided \$500 in November 2021 to the Friends of the Fox River to support stream cleanups throughout the county. Friends of the Fox River organized 52 Watershed weekly publications, 365 facebook posts and twenty two river cleanups, with a total of 237 reported volunteers. In September 2021 FOFR coordinated their 3<sup>rd</sup> annual</p>

	<p>“It’s our Fox River Day” and reported over 20 separate events covering 60 miles of the Fox River. Impressive loads of trash were recovered from the riverbed, thanks to very low water conditions, as well as the shorelines. Nearly 500 participants volunteered for the cleanup event and twenty organizations and municipalities partnered with FOFR for the event.</p>
--	---

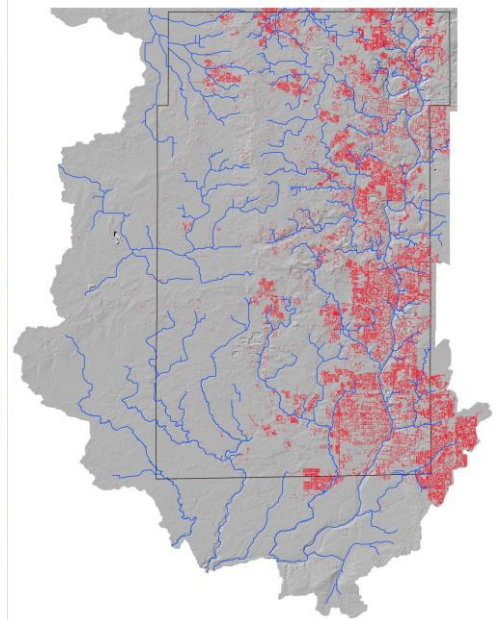
**C. ILLICIT DISCHARGE DETECTION AND ELIMINATION**

**1. BMP C.1—Storm Sewer Map Preparation**

<b>MEASURABLE GOALS</b>	<p>Kane County will update its storm sewer mapping in GIS to include the location and size of all County-owned stormwater outfalls to receiving streams in the urbanized area, and will distribute up-to-date mapping and information across County departments including the Facilities, Transportation, and Emergency Management departments. Update the stormwater system map layer on an annual basis to incorporate new stormwater outfalls identified.</p>
<b>RESULTS</b>	<p>During the permit year, the KCDEWR made more improvements to the County’s stormwater mapping resources. The County’s stormwater mapping resources have been expanded to serve as a countywide drainage infrastructure layer that includes storm sewer routes and detention basin locations for nearly all the municipalities within the County (both MS4 communities and rural communities in the county). The storm sewer mapping has been expanded with more than 50 miles storm sewers, culverts, and drain tiles added to the drainage system mapping across the entire county (2350 miles). The storm sewer / culvert segments mapped to date (80,000 individual items) have been burned into the County’s Digital Elevation Model (from 2017, ft horizontal resolution) to create a hydro-enforced DEM that was then analyzed to create an accurate storm flow path network. This storm flow path network shows how stormwater moves across the county at any location down to the nearest receiving stream. This will give the county and MS4 communities a new tool to use in tracing illicit discharges and quickly mitigating them before they move farther downstream. As it is a collaborative effort with the municipalities, the data layers will be provided back to all the municipalities to help supplement their MS4 mapping resources in 2021 and beyond. The PDF maps showing the complete drainage system network are available to all municipal staff person and now to the general public as well at: <a href="https://www.countyofkane.org/FDER/Pages/County-Drainage-Maps.aspx">https://www.countyofkane.org/FDER/Pages/County-Drainage-Maps.aspx</a>. Additionally, KCDEWR has developed a stormwater flow tracing tool for County staff to utilize for spill responses, illicit discharge investigations and stormwater investigations.</p>



Sample of Kane County's Storm Sewer Map



Map of countywide drainage infrastructure GIS layer in Feb 2022

**2. BMP C.2—Regulatory Control Program**

<p><b>MEASURABLE GOALS</b></p>	<p>Kane County will utilize regulatory authority to prohibit, inspect, and follow-up with enforcement for illegal discharges into the County's MS4 by following established procedures at the Kane County Health Department. Track the number of illicit discharges identified on an annual basis and document the actions taken to eliminate the discharges.</p>
<p><b>RESULTS</b></p>	<p>The Kane County Health Department has continued to enforce its regulatory authority to prohibit, inspect, and follow-up with enforcement for illegal discharges into the County's MS4. During this reporting period, the Health Department received 32 septic complaints.</p> <p>KC Environmental &amp; Water Resources Dept investigated 2 potential illicit discharges during the reporting period. Incident #1 occurred on KC Government Center Property involving a small diesel spill from overfilling a semi trailer fuel tank. This small discharge was contained on the pavement and did not reach the storm sewer system or receiving stream. Incident #2 was reported to the IEPA by a local resident and KCDEWR staff investigated and the discharge was determined to be a sump pump discharge into the road ditch and exacerbated by an apparent leak in the potable water service line into the residence. The Kane County Building Department is working with the resident to fix the water service line leak and reduce the sump pump discharge.</p>

**3. BMP C.10—Other Illicit Discharge Controls**

<p><b>MEASURABLE GOALS</b></p>	<p>Kane County's Environmental Health staff are trained to identify potential illicit discharges to the County's MS4 and to follow the established procedures for eliminating the discharges. Conduct illicit discharge detection training for Environmental Health staff on an annual basis. Track the number of staff trained and total hours of training received.</p>
<p><b>RESULTS</b></p>	<p>Kane County Health Department did not perform any well nor septic staff training during this reporting period due to the COVID-19 pandemic.</p>

**D. CONSTRUCTION SITE RUNOFF CONTROL**

**1. BMP D.1—Regulatory Control Program**

<p><b>MEASURABLE GOALS</b></p>	<p>The Kane County Stormwater Management Ordinance addresses all requirements</p>
--------------------------------	---

	of the Construction Site Runoff Control measures, D.1-D.7. Implement and enforce the Kane County Stormwater Ordinance, maintaining and updating program documentation annually.
<b>RESULTS</b>	During the permit year, 38 Stormwater Permit Applications were submitted to the County. All of these proposed projects were reviewed with consideration of Construction Site Runoff under the requirements of the Kane County Stormwater Management Ordinance. Permits are digitally tracked in the Kane County – CityView system, in addition to a digital copy the County maintains of the permits and plans for Stormwater Permit Applications.

**E. POST-CONSTRUCTION RUNOFF CONTROL**

**1. BMP E.2—Regulatory Control Program**

<b>MEASURABLE GOALS</b>	The Kane County Stormwater Management Ordinance addresses all requirements of the Post-Construction Runoff Control measures, E.1-E.7. Implement and enforce the Kane County Stormwater Ordinance, maintaining and updating program documentation annually.
<b>RESULTS</b>	During the reporting period, 33 Stormwater Permits were issued. Post-Construction Runoff Control measures were implemented on these projects under the requirements of the Kane County Stormwater Management Ordinance. Permits are digitally tracked in the Kane County – CityView, in addition to a digital copy the County maintains of the permits and plans for Stormwater Permit Applications.

**F. POLLUTION PREVENTION/GOOD HOUSEKEEPING**

**1. BMP F.1—Employee Training Program**

<b>MEASURABLE GOALS</b>	Kane County will provide stormwater management training opportunities to County staff as well as other MS4 communities by coordinating a regular “MS4 Corner” e-newsletter, as well as by hosting webcasts. Maintain an email contact list for MS4 community representatives, and distribute the e-newsletter on a minimum of a quarterly basis. Host stormwater informational webcasts as
-------------------------	--

relevant, tracking the number of trainings provided and the number of attendees.

During the permit year, the Kane County Department of Environmental & Water Resources regularly updated the MS4 contact list. Two issues of the “MS4 Corner” newsletter were created and distributed to the contact list [Distributed on: 9/8/21 and 6/2/21]. Newsletters were limited in quantity due to staff time constraints, there will be additional distributions in following permit year to make up for lost communications.

**RESULTS**



*Example issue of MS4 Corner*

During the permit year, Kane County hosted the following webcasts from the Center for Watershed Protection virtually:

- *Planning & Implementation for TMDLs* [6/2/21; 4 Kane County staff attendees]

	<ul style="list-style-type: none"> <li>• <i>Stormwater BMP Selection</i> [6/9/21; 5 participants, 4 Kane County staff]</li> <li>• <i>Public Involvement and Education Programs</i> [9/15/21; 6 attendees, 4 Kane County staff]</li> </ul> <p>In addition, Kane County Environmental &amp; Water Resources staff participated in the following training opportunities provided by other entities:</p> <ul style="list-style-type: none"> <li>• Illinois Association of Floodplain &amp; Stormwater Management Annual Conference in Tinley Park, IL [3/10/21-3/11/21; virtual conference; 3 staff attended]</li> <li>• Michigan Floodplain &amp; Stormwater Virtual Conference [3/4/21; Attended by Anne Wilford]</li> </ul>
--	--

## 2. BMP F.2—Inspection and Maintenance Program

<b>MEASURABLE GOALS</b>	<p>Kane County will continue its established Operation and Maintenance Program – which includes the Department of Transportation clearing roadside swales once a year, and inspecting and cleaning catch basins and storm inlets quarterly. Kane County will also develop and adhere to an annual inspection and maintenance schedule for BMPs installed on County properties, and will utilize available tools to implement a BMP Inventory &amp; Evaluation Program. Inspect and maintain roadside swales, catch basins and storm inlets, and BMPs on County properties according to schedule, documenting pollutant load reduction on an annual basis.</p>
<b>RESULTS</b>	<p>During 2021, the Kane County Department of Transportation swept approximately 90 miles of curbing and 40 bridge decks on a regular seasonal interval.</p> <p>In addition, KDOT cleaned out approximately 500 catch basins on Kirk Rd and Fabyan Pkwy.</p> <p>KCDEWR continues to update its BMP Inventory &amp; Evaluation spreadsheet (see section III) to track data for BMPs installed on Kane County owned properties.</p>

## 3. BMP F.4—Municipal Operations Waste Disposal

<b>MEASURABLE GOALS</b>	<p>Kane County will follow established procedures to maintain buildings, fleet vehicles, and equipment. Procedures include the proper disposal of wastes from municipal operations, in compliance with all local, State, and Federal regulations. Kane County departments will continue to recycle all types of used oil, antifreeze, oil filters, tires, batteries, scrap metal, and cardboard. Perform fleet inspections and recycle hazardous materials on an ongoing basis, documenting compliance with the procedures annually.</p>
<b>RESULTS</b>	

	<p>The Kane County Department of Transportation continues to follow established vehicle maintenance and proper waste disposal procedures, maintaining internal records of these activities using CFA (Computerized Fleet Analysis) Software for fleet tracking.</p> <p>KDOT vehicles are inspected according to the following schedule:</p> <ul style="list-style-type: none"> <li>• Heavy trucks (snow plows, etc.)—every 2000 miles or 180 days</li> <li>• Light trucks and cars—every 5000 miles or 90-180 days</li> <li>• Heavy off-road equipment—every 50 hours or 180 days</li> <li>• Light off-road equipment—every 50 hours or 180 days</li> </ul>
--	---

**4. BMP F.5—Flood Management/Assessment Guidelines**

<b>MEASURABLE GOALS</b>	<p>Kane County will continue to implement the Kane County Hazard Mitigation Program as outlined in the Plan. Host two Hazard Mitigation Committee meetings per year to coordinate ongoing implementation of the plan.</p>
<b>RESULTS</b>	<p>The Kane County Emergency Management Department and Kane County Department of Environmental &amp; Water Resources continue to coordinate the implementation of the <i>Kane County Natural Hazards Mitigation Plan</i>, which was first adopted in 2003 and updated in 2015. The Plan is currently expired as of December of 2020. County Staff is in the process of completing the Plan Update for December of 2022.</p> <p>During the permit year, Kane County Hazard Mitigation Committee meetings were postponed due to COVID.</p> <p>In addition, the Kane County Department of Environmental &amp; Water Resources completed 2 cost-share projects to reduce flooding on unincorporated residential properties (property list available upon request).</p>

**5. BMP F.6—Other Municipal Operations Controls**

<b>MEASURABLE GOALS</b>	<p>Kane County will implement Road Salt Application and Storage procedures to minimize salt washoff into the County’s MS4. Train staff on deicing and salt management procedures on an annual basis. Track the number of training events and participants each year.</p>
<b>RESULTS</b>	<p>The Kane County Department of Transportation provides continual training on salt application and storage procedures via staff manuals, calibrates KDOT trucks to the proper salt dispensing rate, equips each salt truck with a reference table the driver can use to determine the optimal rate of pounds of salt dispensed per</p>

lane mile, and stores salt indoors throughout the year to minimize concentrated salt washoff into the MS4.

The Kane County Department of Environmental & Water Resources also worked with The Conservation Foundation to host a virtual winter road maintenance training that was open to all MS4 communities in the region.

- Public Roads Deicing Workshops were held on September 30, October 5, and October 14, 2021. The links were sharable so the webinars could be viewed individually or in groups. A survey was provided at the end of each webinar to those who had signed in asking for the number of attendees from each agency and for an evaluation of the webinar. The survey results indicated that 10 Kane County representatives participated in the three Public Roads webinars.
- The Parking Lots and Sidewalks Deicing Workshop webinars were held on September 28 and October 7, 2021 with Fortin Consulting, Inc. presenting. The survey results indicated that there was one Kane County representative who viewed the webinars.



REGISTRATION OPEN

[www.SaltSmart.org](http://www.SaltSmart.org)

## 2021 Virtual Deicing Workshops

Public Roads  
September 30, 2021  
October 5, 2021  
October 12, 2021  
8 am–12 pm

Parking Lots & Sidewalks  
September 28, 2021  
October 7, 2021  
8 am–12pm

Hosted by:



Registration is available through [SaltSmart.org](http://SaltSmart.org)

*Kane County Parking Lots and Sidewalks Deicing Workshop flyer*

### III. RESULTS OF INFORMATION COLLECTED AND ANALYZED

No monitoring data was collected and analyzed during the reporting period. Per Attachment B. of the 2016 Notice of Intent, Kane County has elected to implement a BMP Inventory & Evaluation Program in lieu of monitoring (Note: Kane County continues to participate in the Fox River Study Group, Inc., a non-profit organization who is performing on-going watershed-wide water quality monitoring and modeling to address impairments in the Fox River <https://www.foxriverstudygroup.org/> )

During the permit year, the “MS4 Non-Point Source Control Measure Tracking Tool” provided by the Fox River Study Group was used to calculate annual pollutant load reduction for the following BMPs on Kane County government-owned properties:

MS4 Non-Point Source Control Measure Tracking Tool													
Fox River Watershed, Illinois													
MS4	Project Name	Project Cost	Project Type	Total Area Captured (acres)	% Urban High Density	% Low-Medium Density	% Urban Open Space	Area-Weighted UAL (lb/acre/yr)	Load (lb)	Removal Efficiency	Total Load Removed (lb/yr)	Cost per Pound P Removed (\$/lb)	
Kane county	KC Govt Center PICIP Parking Lot	\$250,000	Bioretention	0.99	100%	0%	0%	0.98	1.0	65%	0.6	\$398,408	
Kane county	KC Govt Center Rain Garden	\$25,000	Bioretention	0.4	75%		25%	0.79	0.3	65%	0.2	\$121,768	
Kane county	KC Circuit Court Clerk Parking Lot Bioretention Basins (2)	\$35,000	Bioretention	1.3	95%		5%	0.94	1.2	65%	0.8	\$44,156	
Kane county	KDOT Building Expansion Detention Basin	\$25,000	Dry detention	1.1	75%		25%	0.79	0.9	26%	0.2	\$110,698	
Kane county	KDOT Storage Yard Detention Basin	\$15,000	Dry detention	3.25	100%			0.98	3.2	26%	0.8	\$18,204	
Kane county	KC Judicial Center Pond	\$250,000	Wet detention	250	20%		80%	0.38	95.4	68%	64.9	\$3,854	
Kane county	KDOT Detention at Big Timber & Toad Farm Rd in Elgin Twp	\$25,000	Dry detention	27	90%		10%	0.90	24.3	26%	6.3	\$3,953	
Kane county	KC Multi-Use Facility Detention Basin	\$430,000	Wet detention	6	75%		25%	0.79	4.7	68%	3.2	\$133,467	
Kane county	KDOT Stearns Rd Det 09-0009	\$100,000	Wet detention	7.25	40%		60%	0.53	3.8	68%	2.6	\$38,274	
Kane county	KDOT Stearns Rd Det 09-0010	\$250,000	Wet detention	17.8	40%		60%	0.53	9.4	68%	6.4	\$38,973	
Kane county	KDOT Stearns Rd Det 09-0011	\$100,000	Dry detention	5.9	30%	30%	40%	0.53	3.1	26%	0.8	\$122,444	
Kane county	KDOT Stearns Rd Det 09-0012	\$100,000	Wet detention	6.6	30%		70%	0.46	3.0	68%	2.0	\$48,887	
Kane county	KDOT Stearns Rd Det 09-0013	\$150,000	Wet detention	11.4	40%		60%	0.53	6.0	68%	4.1	\$36,511	
Kane county	KDOT Stearns Rd Det 09-0014	\$100,000	Wet detention	22.6	40%		60%	0.53	12.0	68%	8.1	\$12,278	
Kane county	KDOT Fabyan Pkwy Det 12-003	\$50,000	Wet detention	2.7	100%			0.98	2.6	68%	1.8	\$27,928	
Kane county	KDOT Fabyan Pkwy Det 12-004	\$75,000	Wet detention	2	100%			0.98	2.0	68%	1.3	\$56,553	

An electronic copy of this inventory is available upon request. Two new structural BMPs were constructed on Kane County government-owned property in 2020-2021 which have been added to the County’s BMP inventory – stormwater detention BMPs on Fabyan Parkway for the parkway expansion project.

**IV. SUMMARY OF ANTICIPATED ACTIVITIES DURING NEXT REPORTING CYCLE**

During the upcoming permit year, Kane County staff will continue work to implement the LEED for Cities and Communities monitoring and reporting platforms, which include components on water quality, ecosystem health, waste management, and resiliency. This will provide Kane County the opportunity to further articulate efforts being made to improve water quality and the connection of these efforts to other initiatives throughout the County.

**V. RELIANCE ON ANOTHER GOVERNMENTAL ENTITY**

Kane County is not relying on another governmental entity to satisfy NPDES permit obligations.

## VI. CONSTRUCTION PROJECT LIST

The following Kane County road construction projects were active during the permit year of March 2021—February 2022:

### List of Kane Co DOT Transportation Projects Under Construction or Completed between Mar 2021 -Feb 2022

Section Number	Project Name
'20-00502-02-BT	Fabyan MUP
'21-00000-01-GM	Chip Seal
'21-00000-02-GM	Asphalt Rejuvenator
21-00000-04-GM	2021 Crack seal
21-00000-05-GM	2021 Water Paint pavement
21-00000-06-GM	2021 Uretahane Paint
'19-00509-00-BR	Harter Rd Culvert
'19-00523-00-BR	2020 Bridge Rehab SSP #1
'20-00513-00-CH	Main St at Nelson Lake
'21-00192-07-BR	Kirk over UPRR Deck Repairs
'19-00513-00-BR	Randall and Silver Glen Intersection
'20-00527-00-RS	2021 Resurfacing
'20-00498-01-BR	Bridge Rehab-Stearns, Dunham, Burl.