

Illinois Environmental Protection Agency
ANNUAL FACILITY INSPECTION REPORT
 for NPDES Permit for Storm Water Discharges
 from Municipal Separate Storm Sewer Systems (MS4)

Kane County, Illinois (NPDES Permit No. ILR400259)

March 1, 2025 - February 28, 2026

I. CHANGES TO BEST MANAGEMENT PRACTICES

There are no changes to the Best Management Practices for the six minimum control measures as described in the Notice of Intent for Kane County submitted on May 28, 2021.

II. STATUS OF COMPLIANCE WITH PERMIT CONDITIONS

Kane County submitted a Notice of Intent on May 28, 2021, which initiated a new 5-year permit cycle. The BMPs listed in the 2016 Notice of Intent were selected to meet NPDES Phase II program requirements and minimize nonpoint source pollution in Kane County, Illinois.

The implementation progress for each of these BMPs is summarized below in sections A—F. All BMPs described in Kane County’s 2021 Notice of Intent have been implemented on or ahead of schedule, with the exception of select items noted in their descriptions below.

A. PUBLIC EDUCATION AND OUTREACH

1. BMP A.1—Distributed Paper Material

MEASURABLE GOALS	Include “Water Wise Corner” in the <i>Kane County Recycles Green Guide</i> , which is developed and distributed throughout Kane County on an annual basis. Revise “Water Wise Corner” every spring. Track the total number of recipients each year.
RESULTS	The <i>Kane County Recycles Green Guide</i> for 2026 which included the “Clean Water for Kane” was printed in February 2026. Nearly 20,000 copies will be distributed to libraries, nature centers and other facilities in Spring of 2026.

Kane County Recycles

Green Guide 2026



2026 Recycling Events
Page 5

**New Statewide
Programs: Paint
and Batteries**
Page 7

In the Loop With Loop!
Page 10

Sustain Kane

Conserve Water for Kane



Eligible County residents may apply for a rebate for the purchase and installation of a U.S. EPA **WaterSense-labeled high-efficiency toilet**. Learn more about this opportunity and access other resources for using water more efficiently at conservewaterforkane.org or scan the QR code.



EPA's **WaterSense program** webpage (epa.gov/watersense) has more helpful tips on how to conserve water at the household level.

County residents with **sprinkler systems** that result in high summer water bills are invited to participate in a pilot program to receive a control system that optimizes watering based on real-time weather data and site-specific conditions. Contact HinshawSarra@kanecountyil.gov if you are interested in participating.



Climate Action and Energy Conservation

In June 2024, the Kane County Board adopted the County's first **Climate Action Implementation Plan (CAIP)**. The plan, which recommends more than 250 actions, educates residents on the escalating challenges from climate change while directing County staff to secure funding for projects that address our vulnerability to these risks. If you'd like to learn more about the County's efforts or assist staff with implementing CAIP actions, please contact HinshawSarra@kanecountyil.gov or call 630-444-3157.

Nicor Gas is offering its customers several rebate opportunities to help save money on utility bills in 2026:

- \$500 rebate for sealing air leaks.
- \$400 for adding attic insulation.
- \$100-\$125 back on each high-performance window installed, up to \$3,000.

For more information on how to qualify, visit nicorgas.com or call 877-886-4239.

Kane County's Sustainability Program is offering a rebate to County farmers for weatherization of their homes. Weatherization activities such as window sealing and attic insulation can earn up to \$800 in rebates on a first-come, first-served basis until funding is spent. For more information, call 630-444-3457.



14

Cover and Clean Water for Kane section of the Kane County Recycles Green Guide for 2026

2. BMP A.2—Speaking Engagement

<p>MEASURABLE GOALS</p>	<p>Provide educational presentations related to stormwater management on a regular basis through involvement in local watershed groups and other environmental committees, ensuring that a minimum of one public presentation is given per year. Track the number of speaking engagements, locations, topics</p>
--------------------------------	--

	presented, and number of attendees at each engagement.
RESULTS	<p>A meeting for the Climate Action Implementation Plan was held with 42 volunteers at the Geneva Public Library on March 3rd 2025. Volunteers were updated on progress and educated about upcoming water related initiatives.</p> <p>Kane County Government’s Climate Action Implementation Plan (CAIP) focused on several goals for current permit year. 2 goals related to water conservation and stormwater runoff are described below.</p> <ol style="list-style-type: none"> 1) Establish and promote a program supporting the installation of low-flow water fixtures in residential homes and commercial businesses as well as opportunities for real-time water and energy metering that may help customers better understand and reduce their water and energy consumption. Program may be integrated or coordinated with Energy Audit/Energy Efficiency Program(s) in the Buildings and Energy section of this plan. Goal: achieve 500 households and 40 businesses upgraded annually. <p>The Conserve Water for Kane Program developed a <u>new website</u> that features water saving calculators, workshops, educational materials and more.- In addition, <u>a toilet rebate program</u> was launched in October 2025. The rebate allows up to 3 toilets that are above 1.6 gallon/flush to be replaced with U.S. EPA WaterSense-labeled high efficiency toilet, 1.28 gallon/flush. The rebate covers up to \$200 per toilet and the cost of installation. To date, 76 applicants have been approved totaling \$47,739 in rebates.</p> <ol style="list-style-type: none"> 2) Establish a program to give away trees on an annual basis for residents to plant on their own property. <p>Kane County, in partnership with The Conservation Foundation, has been awarded a \$5,000 Nicor Environmental Stewardship Grant. The grant provided 150 native trees to new homeowners. Along with many benefits, planting trees helps reduce stormwater runoff.</p>

Why are trees important in our neighborhoods?

Trees...

LOWER COOLING & ENERGY COSTS

Trees provide shade and cool the air through evapotranspiration, reducing the urban heat island effect and lowering summer cooling needs for homes.

INCREASE PROPERTY VALUE

Homes with mature, well-placed trees are often more attractive to buyers and can have higher property values compared to properties without trees.

REDUCE STORMWATER RUNOFF

Trees intercept rainfall on their leaves and branches, while their roots help water soak into the soil, reducing flooding, erosion, and strain on storm sewers.

IMPROVES WATER QUALITY

Tree roots filter pollutants like nutrients, oil, and sediment before runoff reaches local streams and rivers.

CLEAN THE AIR

Air pollution has been linked to numerous health benefits. Trees help to remove pollution where people live and work.

MITIGATE THE EFFECTS OF A CHANGING CLIMATE

Climate change can directly impact all aspects of human life. Urban tree plantings help mitigate these effects and store carbon, a major contributor to climate change.

Why plant native tree species?

Native plant: a species that is naturally found in your region or ecosystem, and that co-evolved as part of the area's balanced ecosystem over thousands of years along with native wildlife.

NATIVE TREES PERFORM BETTER

Native species are adapted to local soils and climate, making them more resilient, longer-lived, and better at managing stormwater than non-native trees.

SUPPORT WILDLIFE AND POLLINATORS

Native trees provide food and habitat for birds, insects, and pollinators that local ecosystems depend on.

CONNECT PEOPLE TO LOCAL ECOSYSTEMS

Providing habitat for local wildlife and plant species allow people to feel a sense of place and connectedness to nature where they live and work.

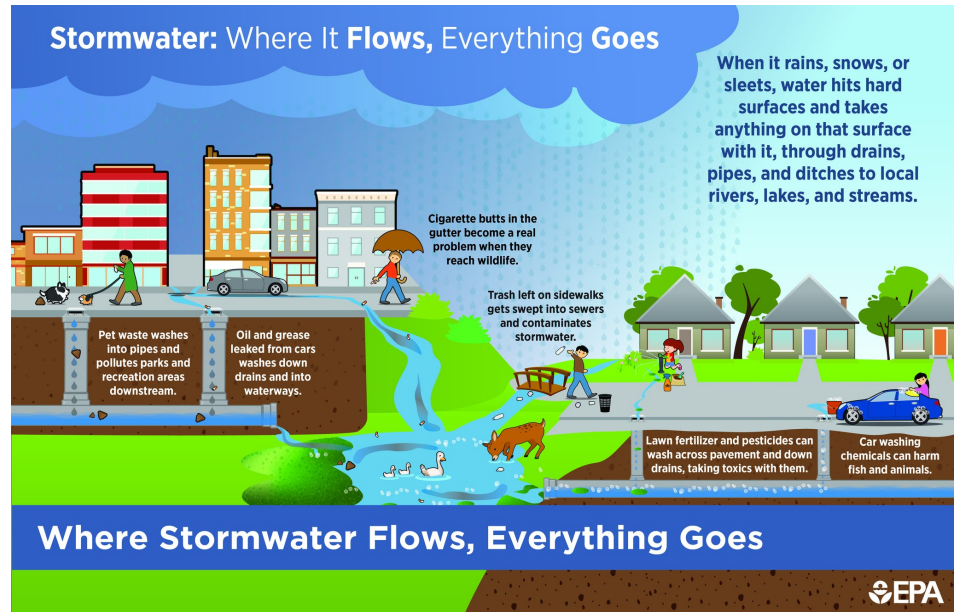
MAKE STREETS QUIETER AND SAFER

Trees and shrubs reduce noise by absorbing sound, especially at high frequencies. On a community-wide level, the presence of trees in urban neighborhoods has been linked to reducing aggression, contributing to stronger ties among neighbors, creating a greater sense of safety, and promoting use of neighborhood common spaces.

3. BMP A.3—Public Service Announcement

MEASURABLE GOALS	<p>A public service announcement for the “Clean Water for Kane” campaign was developed in 2014, and is made available to the community through the Kane County website, special showings, and other digital media outlets.</p> <p>Track the number of PSA showings, locations, and audience reached each year.</p>
RESULTS	<p>Kane County also has continued to update the sustainability Facebook page. https://www.facebook.com/sustainkane/</p> <p>Posts that were made related to water education are:</p> <ol style="list-style-type: none"> 1) Showing the benefits of smart sprinklers (August 2025) 2) Promoting the newly formed Climate Education Hub (October 2025) 3) Where you leave your leaves matter graphic (October 2025)

4) Where Stormwater Flows, Everything Goes (April 2025)



4. BMP A.4—Community Event

<p>MEASURABLE GOALS</p>	<p>Educate residents and other stakeholder groups on stormwater Best Management Practices through participation in environmental and watershed special events in the community, and regular community education/training events including the annual well and septic seminar hosted by the Kane County Health Department. Coordinate a minimum of one public educational workshop per year and participate in other community outreach events. Track the number of events, locations, information distributed, and number of participants for each event.</p>
<p>RESULTS</p>	<p>Kane County staff participated in the community events listed below during the permit year. Stormwater educational handouts were distributed at the community events held in person at the tabling events below.</p> <ul style="list-style-type: none"> • Loyola University Sustainability Conference on March 13th • Hawthorne Hills “Mud Day” event <p>The Kane County Health Department did not hold its annual Well & Septic educational event due to staffing shortages.</p> <p>Friends of the Fox’s public outreach included area libraries, events at Schweitzer Environmental Center, STEM fairs, and the first annual EL CARDUNAL paddle connected and educated at least 835 more Kane County residents on their local watershed.</p>

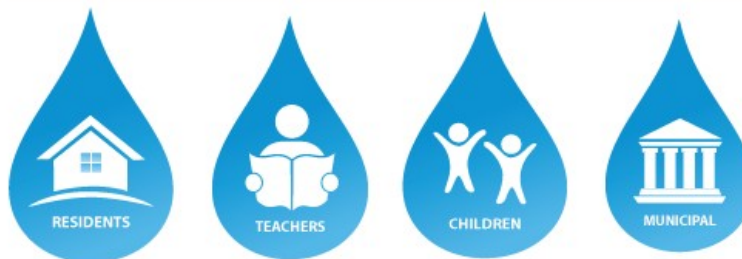
5. BMP A.5—Classroom Education Material

<p>MEASURABLE GOALS</p>	<p>Maintain a collection of stormwater-related educational materials for use in the classroom, and also reach students in the community through educational displays at libraries and other community venues. Update the classroom educational material database on an annual basis. Track the number of educational displays, locations, materials distributed, and number of students reached throughout the year.</p>
<p>RESULTS</p>	<p>Presentation to schools regarding climate change and sustainability, including conservation of water and best management practices, were given at Batavia Middle School (150 students) in April 22 and Compass Academy on May 3rd (25 students).</p> <p>The Department continued to provide educational materials—including water conservation coloring books and stickers, <i>Clean Water for Kane</i> rain gages, toilet leak detection tabs, stormwater runoff awareness, pet waste tip cards, and outdoor water use brochures—to partner organizations, particularly the Forest Preserve District of Kane County and Friends of the Fox River for the Schweitzer Environmental Center.</p> <p>Additionally, Kane County Department of Environmental and Water Resources allocated \$1500 of FY25 funding to Friends of the Fox River (FOFR) for their Classroom Educational Programming and pledges funding for FY26.</p> <p>For all of Kane County, Friends of the Fox River organized student education through 21 field trips, 6 campus lessons and 22 afterschool programs, reaching a total of 770 students. Additionally, FOTFR hosted three weeks of summer camp for 30 kids and provided enrichment for Girl Scouts, KinderCare and other area camps to educate an additional 560 youth.</p>

6. BMP A.6 – Other Public Education

<p>MEASURABLE GOALS</p>	<p>The Kane County Department of Environmental & Water Resources maintains a “Clean Water for Kane” website, and also develops seasonal stormwater-related informational articles that are distributed through the Kane County Connects e-newsletter, website, and social media pages. Update the “Clean Water for Kane” web pages on an annual basis. Track the number of stormwater-related articles in Kane County Connects, topics covered, and audience reach each year.</p>
<p>RESULTS</p>	<p>During the permit year, the Kane County Department of Environmental & Water Resources updated the “Stormwater Education” pages on the County website. The site had 402 views during the permit year.</p>

Stormwater Education



Stormwater Education page of the Kane County website:
www.countyofkane.org/FDER/Pages/EnvironmentalResources/stormwaterEducation.aspx

In addition, three water-related articles were published in *Kane County Connects*:

- Have You Seen the New Stream Signs Around Kane County? [9/03/25]
<https://kanecountyconnects.com/article/KaneCounty-Signs-Streams-watersupply>
- Kane County Launches Smart Sprinkler Pilot Program to Promote Water Conservation and Lower Utility Costs [07/07/2025]
<https://kanecountyconnects.com/article/KaneCounty-Sprinklers-WaterConservation>
- *Remembering the 1996 Kane County Flood: What You Need to Know About Flood Risks and Safety* [7/21/25]
<https://kanecountyconnects.com/article/OEM-DepartmentofEnvironmentalWaterResources-KaneCounty>

Kane County Connects reaches 21,500 newsletter subscribers and over 1.3K followers on social media.

7. BMP A.6 – Other Public Education

MEASURABLE GOALS	The Kane County Department of Environmental & Water Resources maintains a supply of “Kane County Streams” signs to be installed at road crossings throughout the County. Kane County will provide the signs to MS4 communities as requested for installation within their own municipal boundaries, and will maintain a database of signs manufactured and installed throughout the year.
RESULTS	During the permit year, over 100 stream signs were installed along Kane County Transportation owned roadways.



<https://kanecountyconnects.com/article/KaneCounty-Signs-Streams-watersupply>

B. PUBLIC PARTICIPATION/INVOLVEMENT

1. BMP B.3—Stakeholder Meeting

<p>MEASURABLE GOALS</p>	<p>Kane County is involved in watershed planning and management efforts that seek input from a variety of watershed stakeholders. Provide notice of stakeholder meetings on the Kane County website and distribute meeting information to stakeholder email lists. Track the number of watershed meetings hosted or co-hosted by the County, meeting locations, topics discussed, and participation numbers.</p>
<p>RESULTS</p>	<p>During the permit year, the following stakeholder meetings were held/attended by Kane County:</p> <ul style="list-style-type: none"> • Tyler Creek Watershed Coalition meetings – 3/19/25, 5/21/25, 6/18/25, 7/16/25, 8/20/25, 9/17/25, 10/15/25, 11/19/25, 1/21/26, 2/18/26

2. BMP B.5—Volunteer Monitoring

<p>MEASURABLE GOALS</p>	<p>Kane County continues to take a multi-level approach to supporting stream</p>
--------------------------------	--

	<p>monitoring efforts by holding a leadership role in watershed groups carrying out monitoring work, as well as by providing financial support for local volunteer monitoring programs and river monitoring via USGS stream gages. Maintain Joint Funding Agreement with USGS and allocate funding for stream gages. Support local volunteer monitoring program. Track the number of leadership meetings attended and the funding provided on an annual basis.</p>
<p>RESULTS</p>	<p>Kane County staff served on the Board of Directors of the Fox River Study Group and as an advisor to the Fox River Ecosystem Partnership, attending the following meetings during the permit year:</p> <ul style="list-style-type: none"> • Fox River Study Group Board meetings held via Zoom [3/27/25, 4/24/25; 5/22/25, 6/26/25, 7/24/25, 9/25/25, 10/17/245, 10/23/25, 11/5/25 (Annual Meeting), 12/18/25, 1/22/25, 2/26/26] • Fox River Study Group Committee of the Whole meetings held via Zoom 3/24/25, 4/10/25, 5/8/25,6/12/25,7/10/25,9/11/25,10/9/25, 11/13/25,12/11/25,1/8/26, 2/12/26 • Fox River Ecosystem Partnership meetings [3/13/25(Fox R. Summit), 5/14/25, 7/9/25, 8/13/25, 11/12/25, 12/16/25, 1/14/26, 2/11/26] <p>In addition, the Kane County Department of Environmental & Water Resources provided financial support of \$500 to the Friends of the Fox River for their volunteer monitoring program in November 2025. Friends of the Fox River organized monthly creek sampling at Tyler, Otter and Ferson Creeks.</p> <p>A Joint Funding Agreement between Kane County and the U.S. Geological Survey passed by Kane County Board on 10/14/2025 to cover the time period December 1, 2025 through November 30, 2026. Kane County has committed \$75,500_of FY26 funding to support five stream gages and four precipitation gages.</p>

3. BMP B.7—Other Public Involvement

<p>MEASURABLE GOALS</p>	<p>Kane County will provide technical and financial support to the Friends of the Fox River and other local watershed groups to ensure that opportunities exist for public involvement in stream cleanup efforts. Allocate funding to support stream cleanups on an annual basis. Track the number of planning meetings or cleanup events attended by Kane County staff each year.</p>
--------------------------------	--

RESULTS	<p>The Kane County Department of Environmental & Water Resources provided \$500 in July 2025 to the Friends of the Fox River to support stream cleanups throughout the county. Friends of the Fox River organized 52 Watershed weekly publications with 2,137 subscribers, over 500 Facebook posts that educate and inform over 10,000 subscribers. Their website had 98,000 views, 68,000 sessions, with 52,000 active users. In addition, FOFR had 7 river cleanups in Kane County throughout the permitting period, and participated in the 2025 mussel survey as well ecological restoration events including oak tree planting. FOFR was a partner organization for the annual Rusty Rodeo, helping educate over 500 residents on the invasive Rusty Crayfish and other native macroinvertebrates.</p> <p>For the 2025 annual "It's our Fox River Day" FOFR reported over 20 separate events in Kane County with over 500 participants including 300 volunteers for 15 river cleanups of trash from in and around the Fox River and its streams.</p>
----------------	---

C. ILLICIT DISCHARGE DETECTION AND ELIMINATION

1. BMP C.1—Storm Sewer Map Preparation

MEASURABLE GOALS	<p>Kane County will update its storm sewer mapping in GIS to include the location and size of all County-owned stormwater outfalls to receiving streams in the urbanized area, and will distribute up-to-date mapping and information across County departments including the Facilities, Transportation, and Emergency Management departments. Update the stormwater system map layer on an annual basis to incorporate new stormwater outfalls identified.</p>
-------------------------	--

RESULTS	<p>During the permit year, the KCDEWR continues to make improvements to the County’s stormwater mapping resources. The County’s stormwater mapping resources are countywide (unincorporated and municipalities) and include all known storm sewers, culverts, drain tiles, and detention basins. Storm sewer mapping has expanded from 3,176 miles in the last reporting period to 3,434 miles in this reporting period. Mapped storm sewer, culvert & tile segments increased from 165,000 segments in 2025 to more than 167,000 in 2026. Additionally, storm structures such as catch basins, inlets, manholes, and flared end sections have been added to the mapping dataset to include the more than 182,000 structures through the Feb 2026 reporting period. During the reporting period, 8 new stormwater detention basins were mapped (basins = 3,431).</p> <p>The KCDEWR worked with the County GIS Dept. to update the Kane County Stormwater Viewer, which is an on-line interactive map of all stormwater infrastructure and related water resources data for the entire county (floodplains, wetlands, hydric soils, etc.). The viewer can be found at the link below:</p> <p>https://experience.arcgis.com/experience/094fedf250d34bf19cb22881ddb2d66d/</p>
----------------	---

2. BMP C.2—Regulatory Control Program

MEASURABLE GOALS	<p>Kane County will utilize regulatory authority to prohibit, inspect, and follow-up with enforcement for illegal discharges into the County's MS4 by following established procedures at the Kane County Health Department. Track the number of illicit discharges identified on an annual basis and document the actions taken to eliminate the discharges.</p>
-------------------------	---

The Kane County Health Department has continued to enforce its regulatory authority to prohibit, inspect, and follow-up with enforcement for illegal discharges into the County’s MS4. The Health Department investigated 13 septic system complaints.

KC Environmental & Water Resources Dept investigated 3 potential illicit discharges during the reporting period.

KANE COUNTY ILLICIT DISCHARGE INCIDENT TRACKING

Period: March 2023 - February 20243

RESULTS

Date	Location	Issue	Outcome
11/13/25	Behind 111 S. Randall Rd (Marcus Theaters) <u>CITY OF ELGIN</u>	Cloudy white discharge observed by KCDEWR staff during culvert inspection on Randall Rd at Ferson Cr. Traced upstream to City of Elgin 60” storm outfall behind theater into Ferson Cr.	City of Elgin Water Department investigated and reported to County that the white cloudy discharge in water the night of 11/13 was no longer observed the next morning and was caused by emergency repairs to a watermain break far upstream at the upper end of the large storm sewer system that outlets to Ferson Cr behind 111 S. Randall Rd.
11/25/25	Wilson St – Kirk Rd Intersection <u>CITY OF BATAVIA</u>	Diesel spill from semi fuel tank ruptured during traffic accident. Possible diesel into City of Batavia and KDOT storm sewer.	Batavia Fire Dept deployed soil & sand berms around storm sewer inlets. Oil dry granules applied to diesel on pavement. City of Batavia Public Works and KDOT staff coordinated with semi’s towing company to inspect downstream storm sewer system using Kane Co Stormwater Viewer as a guide and deployed oil-absorbent materials to ensure no diesel passed downstream to Mahoney Cr. City also required storm sewer to be jetted by towing company as extra precaution.
12/5/25	Hawthorne St – Foothill Dr Intersection Elgin Township	Local residents reported a foul odor smell coming from discharge of storm sewer outfall at NW corner of intersection.	KCDEWR investigated and traced flow north/upstream to City of Elgin water treatment plant. City of Elgin Water Director reported that the smell was almost certainly from their well water discharge as the Airlite Water Treatment Plant was conducting well testing and the excess pumped well water during the testing was discharged to the storm sewer system. Smell was hydrogen sulfide in the well water.

3. BMP C.10—Other Illicit Discharge Controls

MEASURABLE GOALS	Kane County's Environmental Health staff are trained to identify potential illicit discharges to the County's MS4 and to follow the established procedures for eliminating the discharges. Conduct illicit discharge detection training for Environmental Health staff on an annual basis. Track the number of staff trained and total hours of training received.
RESULTS	Kane County Health Department conducted two onsite training sessions for a total of 2 hours (5 staff members attended). Three staff members from the well and septic program attended a 6-hour private sewage disposal training in March 2025 and 10 staff members attended an IEHA conference that included 3 hours of private sewage disposal program training in April of 2025.

D. CONSTRUCTION SITE RUNOFF CONTROL

1. BMP D.1—Regulatory Control Program

MEASURABLE GOALS	The Kane County Stormwater Management Ordinance addresses all requirements of the Construction Site Runoff Control measures, D.1-D.7. Implement and enforce the Kane County Stormwater Ordinance, maintaining and updating program documentation annually.
RESULTS	During the permit year, 55 Stormwater Permit Applications were submitted to the County. All of these proposed projects were reviewed with consideration of Construction Site Runoff under the requirements of the Kane County Stormwater Management Ordinance. Permits are digitally tracked in the Kane County – CityView system, in addition to a digital copy, the County maintains a complete folder of the permits and plans for Stormwater Permit Applications.

E. POST-CONSTRUCTION RUNOFF CONTROL

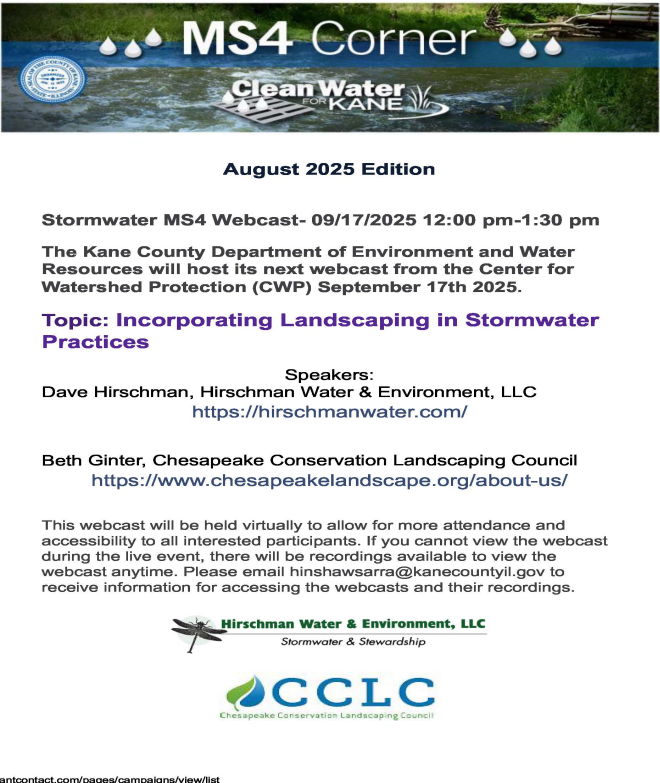


1. BMP E.2—Regulatory Control Program

MEASURABLE GOALS	The Kane County Stormwater Management Ordinance addresses all requirements of the Post-Construction Runoff Control measures, E.1-E.7. Implement and enforce the Kane County Stormwater Ordinance, maintaining and updating program documentation annually.
RESULTS	During the reporting period, 45 Stormwater Permits were issued. Post-Construction Runoff Control measures were implemented on these projects under the requirements of the Kane County Stormwater Management Ordinance. This included 29 permits requiring a Stormwater BMP (structural feature to infiltrate first 1” of stormwater runoff from new impervious surfaces) and 5

	permits requiring stormwater detention for the 100-year design storm event. Permits are digitally tracked in the Kane County – CityView, in addition to a digital copy the County maintains a complete set of the permits and plans for Stormwater Permit Applications.
--	---

F. POLLUTION PREVENTION/GOOD HOUSEKEEPING

1. BMP F.1—Employee Training Program

MEASURABLE GOALS	Kane County will provide stormwater management training opportunities to County staff as well as other MS4 communities by coordinating a regular “MS4 Corner” e-newsletter, as well as by hosting webcasts. Maintain an email contact list for MS4 community representatives, and distribute the e-newsletter on a minimum of a quarterly basis. Host stormwater informational webcasts as relevant, tracking the number of trainings provided and the number of attendees.
RESULTS	<p>During the permit year, the Kane County Department of Environmental & Water Resources issued 3 issues of the “MS4 Corner” newsletter and distributed to the contact list during the reporting period [Distributed on: August/25, December/25 and February/26].</p> <div style="text-align: center;"> <p><small>5/13/26, 1:08 PM</small> <small>Email from Kane County Government</small></p>  <p>August 2025 Edition</p> <p>Stormwater MS4 Webcast- 09/17/2025 12:00 pm-1:30 pm</p> <p>The Kane County Department of Environment and Water Resources will host its next webcast from the Center for Watershed Protection (CWP) September 17th 2025.</p> <p>Topic: Incorporating Landscaping in Stormwater Practices</p> <p>Speakers: Dave Hirschman, Hirschman Water & Environment, LLC https://hirschmanwater.com/</p> <p>Beth Ginter, Chesapeake Conservation Landscaping Council https://www.chesapeakelandscape.org/about-us/</p> <p>This webcast will be held virtually to allow for more attendance and accessibility to all interested participants. If you cannot view the webcast during the live event, there will be recordings available to view the webcast anytime. Please email hinshawsarra@kanecountyil.gov to receive information for accessing the webcasts and their recordings.</p> <p> Hirschman Water & Environment, LLC Stormwater & Stewardship</p> <p> CCLC Chesapeake Conservation Landscaping Council</p> <p><small>https://app.constantcontact.com/pages/campaigns/view/list <small>1/4</small></small></p> </div>

01/11

5/13/26, 1:08 PM

Email from Kane County Government

new NOI is not needed. As before, Annual Reports will need to be submitted to the IEPA prior to June 1st each year, although beginning 12/21/2025, all reporting documents and NOIs are to be submitted through the State's Central Data Exchange (CDX) on-line portal. Some of the most notable changes/additions to the MS4 permit include 1. Increased reporting requirements in your MS4 Annual Report, 2. Inclusion of each MS4's storm sewer system map, 3. Detailed reporting on stormwater systems inspected annually, such as storm outfalls, catch basins, etc., 3. A rolling inventory of active construction sites larger than 1 acre, and 4. Evaluation of post-construction stormwater BMPs to document the reduction in stormwater runoff and pollutants. There are workshops being planned by the Illinois Water Environment Association in cooperation with the IEPA and local county stormwater agencies to provide more details and guidance to MS4 permittees to comply with the new permit requirements. Those workshops are expected to occur later in September or October. Stay tuned for more details!

Stormwater pollution sucked up by specialized sponge

Check out [this article](#) about how a sponge coated with nanoparticles that have an affinity for pollutants, can collect metals like zinc and copper, as well as phosphate, and in previous iterations has successfully pulled lead from water, and microplastics and oil from lakes and oceans.

Full publication: <https://doi.org/10.1021/acsestwater.4c01234>

Sarra Hinshaw Ph.D
Sustainability Manager
HinshawSarra@KaneCountyIL.gov
Kane County Environmental & Water Resources Department
Ph: 630-208-8665

Kane County Government | [Stormwater Resources Homepage](#)

Kane County Government | 719 S. Batavia Ave. | Geneva, IL 60134 US

[Unsubscribe](#) | [Update Profile](#) | [Constant Contact Data Notice](#)

<https://app.constantcontact.com/pages/campaigns/view/list>

3/4

During the permit year, Kane County hosted the following webcasts from the Center for Watershed Protection virtually:

- *Incorporating Landscaping in Stormwater Practices* [09/17/25]
- *Introduction to GIS for Watershed Planning* [12/10/25]
- *Emerging Contaminants in Urban Runoff: Risk, Regulation, and Remediation* [02/18/26]

In addition, Kane County Environmental & Water Resources staff participated in the following training opportunities provided by other entities:

- Illinois Association of Floodplain & Stormwater Management Annual Conference in Tinley Park IL [3/11/25-3/12/25; 4 staff attended]

2. BMP F.2—Inspection and Maintenance Program

MEASURABLE GOALS

Kane County will continue its established Operation and Maintenance Program – which includes the Department of Transportation clearing roadside swales once a

	<p>year, and inspecting and cleaning catch basins and storm inlets quarterly. Kane County will also develop and adhere to an annual inspection and maintenance schedule for BMPs installed on County properties, and will utilize available tools to implement a BMP Inventory & Evaluation Program. Inspect and maintain roadside swales, catch basins and storm inlets, and BMPs on County properties according to schedule, documenting pollutant load reduction on an annual basis.</p>
RESULTS	<p>During 2025, the Kane County Department of Transportation swept approximately 175 miles of curbing and 42 bridge decks. Sweeping was done twice – once in the spring and once in the fall.</p> <p>KDOT cleaned out approximately 325 catch basins on center Randall Rd and Fabyan Rd.</p> <p>KDOT cleaned all bridge deck drains and joints.</p> <p>KCDEWR continues to update its BMP Inventory & Evaluation spreadsheet (see section III) to track data for BMPs installed on Kane County owned properties.</p>

3. BMP F.4—Municipal Operations Waste Disposal

MEASURABLE GOALS	<p>Kane County will follow established procedures to maintain buildings, fleet vehicles, and equipment. Procedures include the proper disposal of wastes from municipal operations, in compliance with all local, State, and Federal regulations. Kane County departments will continue to recycle all types of used oil, antifreeze, oil filters, tires, batteries, scrap metal, and cardboard. Perform fleet inspections and recycle hazardous materials on an ongoing basis, documenting compliance with the procedures annually.</p>
RESULTS	<p>The Kane County Department of Transportation continues to follow established vehicle maintenance and proper waste disposal procedures, maintaining internal records of these activities using CFA (Computerized Fleet Analysis) Software for fleet tracking.</p> <p>KDOT vehicles are inspected according to the following schedule:</p> <ul style="list-style-type: none"> • Heavy trucks (snow plows, etc.)—every 2000 miles or 180 days • Light trucks and cars—every 5000 miles or 90-180 days • Heavy off-road equipment—every 50 hours or 180 days • Light off-road equipment—every 50 hours or 180 days <p>KDOT also took part in a county organized tire recycle program, recycling over 100 tires from either KDOT fleet vehicles or tires found in the county right-of-way.</p>

4. BMP F.5—Flood Management/Assessment Guidelines

MEASURABLE GOALS	Kane County will continue to implement the Kane County Hazard Mitigation Program as outlined in the Plan. Host two Hazard Mitigation Committee meetings per year to coordinate ongoing implementation of the plan.
RESULTS	<p>The Kane County 2024 Kane County Natural Hazard Mitigation Plan was finalized in March 2024. http://www.kcoem.org/Pages/mitigation.aspx</p> <p>The Kane County Office of Emergency Management and Kane County Department of Environmental & Water Resources continue to coordinate the implementation of the <i>Kane County Natural Hazards Mitigation Plan</i>, which was first adopted in 2003 and updated in 2015. The Natural Hazards Mitigation Planning Committee along with a consultant, paid for through an HPMG grant fund awarded by FEMA to the County, has updated the 2015 Plan. The 2024 Plan was approved by FEMA on April 1, 2024 and adopted by the County Board on June 11, 2024.</p> <p>The Natural Hazard Mitigation Planning Committee held a meeting on December 19, 2025, which the public was invited to attend, along with the participating communities’ planners, engineers and emergency management staff.</p> <p>In addition, the Kane County Department of Environmental & Water Resources worked on 2 cost-share project to reduce flooding on unincorporated residential properties:</p> <ol style="list-style-type: none"> 1. Marney-Kelley Hampshire– design phase 2025, construction in 2026 2. Pokagon Creek Stabilization Project – design in 2025, construction in 2026 <p>KCDEWR also coordinated and funded through it’s Drainage Cost Share Program the Rt 30 Storm Sewer Project in the Village of Big Rock, which went to construction in late 2025.</p>

5. BMP F.6—Other Municipal Operations Controls

MEASURABLE GOALS	Kane County will implement Road Salt Application and Storage procedures to minimize salt washoff into the County’s MS4. Train staff on deicing and salt management procedures on an annual basis. Track the number of training events and participants each year.
RESULTS	The Kane County Department of Transportation provides continual training on salt application and storage procedures via staff manuals. All KDOT winter truck staff attended the 2025 deicing workshop for sensible salting. Superintendent attended the APWA Winter maintenance supervisor workshop. KDOT calibrates trucks yearly to ensure the proper salt dispensing rate, equips each salt truck with a reference table the driver can use to determine the optimal rate of pounds of

salt dispensed per lane mile, and stores salt indoors throughout the year to minimize concentrated salt wash off into the MS4. KDOT responded to 44 winter events using 8,500 tons of salt for the season. KDOT supervisors also utilize GPS software to track salt usage to minimize salt over-application.

The Kane County Department of Environmental & Water Resources also worked with The Conservation Foundation to host a virtual winter road maintenance training that was open to all MS4 communities in the region.

Public Roads Deicing Workshops were held on September 17th, September 24th, October 3rd, October 8th and October 15th 2025. The links were sharable so the webinars could be viewed individually or in groups. A survey was provided at the end of each webinar to those who had signed in asking for the number of attendees from each agency and for an evaluation of the webinar.

28 Kane County representatives participated in the three Public Roads webinars, KCDOT staff, supervisors and snow plow operators attended the webinar.



2025 Deicing Workshops

Reminder - Deicing Workshops are happening now. Sign up today.
<https://saltsmart.org/workshops/>

The 2025 workshops feature innovative, local Salt Smart practices for public roads. The training was created with input from local public works and county DOT staff to provide an overview of current and next level practices to meet annual training needs.

SAVE THE DATES!

2025 Winter Best Practices Workshops

Hosted By:

Winter Best Practices for Public Roads

- September 16 – In-Person, DuPage County DOT
- September 23 – In-Person, Village of New Lenox
- September 25 – Virtual
- September 30 – In-Person, Lake County - Libertyville
- October 7 – Virtual
- November 12 – Virtual

The workshops feature innovative, local Salt Smart practices for public roads. The training was created with input from local public works and county DOT staff to provide an overview of current and next level practices to meet annual training needs.

Outreach Partners:

Salt Smart Certified Parking Lots & Sidewalks

- October 2 – Virtual
- October 14 – Virtual
- November 13 – Virtual

Salt Smart Certified workshops are geared towards both private contractors and public agencies with a local focus on industry-accepted best practices for parking lots and sidewalks.

New for 2025!

Calibration Workshops for Force America Equipment

November 4, 5, and 6

Reserve a 1-hour time slot to bring one plow truck and up to 5 staff members to learn how to calibrate your Force America spreading equipment. One time slot per organization.

Kane County Parking Lots and Sidewalks Deicing Workshop flyer

III. RESULTS OF INFORMATION COLLECTED AND ANALYZED

No monitoring data was collected and analyzed during the reporting period. Per Attachment B. of the 2016 Notice of Intent, Kane County has elected to implement a BMP Inventory & Evaluation Program in lieu of monitoring (Note: Kane County continues to participate in the Fox River Study Group, Inc., a non-profit organization who is performing on-going watershed-wide water quality monitoring and modeling to address impairments in the Fox River <https://www.foxriverstudygroup.org/>)

During the permit year, the “MS4 Non-Point Source Control Measure Tracking Tool” provided by the Fox River Study Group was used to calculate annual pollutant load reduction for the following BMPs on Kane County government-owned properties. Previously constructed BMPs (wet detention basins) were added into the inventory. Three (3) new structural BMPs were constructed on Kane County government-owned property in Mar 2025 – Feb 2026. These were wetland-style stormwater detention basins – 3 in Blackberry Township built for the Bunker Rd Extension Project (see table below).

MS4 Non-Point Source Control Measure Tracking Tool												
Fox River Watershed, Illinois												
MS4	Project Name	Project Cost	Project Type	Total Area Captured (acres)	% Urban High Density	% Low-Medium Density	% Urban Open Space	Area-Weighted UAL (lb/acre/yr)	Load (lb)	Removal Efficiency	Total Load Removed (lb/yr)	Cost per Pound P Removed (\$/lb)
Kane county	KC Govt Center PICP Parking Lot	\$250,000	Bioretention	0.99	100%	0%	0%	0.98	1.0	65%	0.6	\$398,408
Kane county	KC Govt Center Rain Garden	\$25,000	Bioretention	0.4	75%		25%	0.79	0.3	65%	0.2	\$121,768
Kane county	KC Circuit Court Clerk Parking Lot Bioretention Basins (2)	\$35,000	Bioretention	1.3	95%		5%	0.94	1.2	65%	0.8	\$44,156
Kane county	KDOT Building Expansion Detention Basin	\$25,000	Dry detention	1.1	75%		25%	0.79	0.9	26%	0.2	\$110,698
Kane county	KDOT Storage Yard Detention Basin	\$15,000	Dry detention	3.25	100%			0.98	3.2	26%	0.8	\$18,204
Kane county	KC Judicial Center Pond	\$250,000	Wet detention	250	20%		80%	0.38	95.4	68%	64.9	\$3,854
Kane county	KDOT Detention at Big Timber & Tood Farm Rd in Elgin Twp	\$25,000	Dry detention	27	90%		10%	0.90	24.3	26%	6.3	\$3,953
Kane county	KC Multi-Use Facility Detention Basin	\$430,000	Wet detention	6	75%		25%	0.79	4.7	68%	3.2	\$133,467
Kane county	KDOT Stearns Rd Det 09-0009	\$100,000	Wet detention	7.25	40%		60%	0.53	3.8	68%	2.6	\$38,274
Kane county	KDOT Stearns Rd Det 09-0010	\$250,000	Wet detention	17.8	40%		60%	0.53	9.4	68%	6.4	\$38,973
Kane county	KDOT Stearns Rd Det 09-0011	\$100,000	Dry detention	5.9	30%	30%	40%	0.53	3.1	26%	0.8	\$122,444
Kane county	KDOT Stearns Rd Det 09-0012	\$100,000	Wet detention	6.6	30%		70%	0.46	3.0	68%	2.0	\$48,887
Kane county	KDOT Stearns Rd Det 09-0013	\$150,000	Wet detention	11.4	40%		60%	0.53	6.0	68%	4.1	\$36,511
Kane county	KDOT Stearns Rd Det 09-0014	\$100,000	Wet detention	22.6	40%		60%	0.53	12.0	68%	8.1	\$12,278
Kane county	KDOT Fabyan Pkwy Det 12-003	\$50,000	Wet detention	3.8	100%			0.98	3.7	68%	2.5	\$19,843
Kane county	KDOT Fabyan Pkwy Det 12-004	\$75,000	Wet detention	2	50%		50%	0.60	1.2	68%	0.8	\$91,278
Kane county	KDOT LM Pkwy Det 03-001	\$150,000	Wet detention	18.5	50%		50%	0.60	11.2	68%	7.6	\$19,736
Kane county	KDOT LM Pkwy Det 03-002	\$100,000	Wet detention	6	85%		15%	0.86	5.2	68%	3.5	\$28,373
Kane county	KDOT LM Pkwy Det 03-003	\$150,000	Wet detention	17.3	75%		25%	0.79	13.7	68%	9.3	\$16,147
Kane county	KDOT LM Pkwy Det 03-004	\$75,000	Wet detention	5	75%		25%	0.79	3.9	68%	2.7	\$27,935
Kane county	KDOT LM Pkwy Det 03-005	\$50,000	Wet detention	3.8	75%		25%	0.79	3.0	68%	2.0	\$24,504
Kane county	KDOT LM Pkwy Det 03-006	\$150,000	Wet detention	19.5	30%		70%	0.46	8.9	68%	6.0	\$24,820
Kane county	KDOT LM Pkwy Det 03-007	\$150,000	Wet detention	18.5	85%		15%	0.86	16.0	68%	10.9	\$13,803
Kane county	KDOT LM Pkwy Det 03-008	\$200,000	Wet detention	13.4	70%		30%	0.75	10.1	68%	6.9	\$29,166
Kane county	KDOT Dauberman Rd Det 13-001	\$200,000	Wet detention	6.9	85%		15%	0.86	6.0	68%	4.1	\$49,344
Kane county	KDOT Dauberman Rd Det 13-002	\$200,000	Wet detention	5.75	85%		15%	0.86	5.0	68%	3.4	\$59,213
Kane county	KDOT Dauberman Rd Det 13-003	\$150,000	Wet detention	2.7	85%		15%	0.86	2.3	68%	1.6	\$94,577
Kane county	KDOT Dauberman Rd Det 13-004	\$225,000	Wet detention	5.2	85%		15%	0.86	4.5	68%	3.1	\$73,661
Kane county	KDOT Bliss Rd Det 11-001	\$100,000	Wet detention	10.1	85%		15%	0.86	8.7	68%	5.9	\$16,855
Kane county	KDOT Bliss Rd Det 11-002	\$100,000	Wet detention	9.7	85%		15%	0.86	8.4	68%	5.7	\$17,550
Kane county	KDOT Dauberman Rd Det 13-005	\$100,000	Wet detention	1.1	85%		15%	0.86	1.0	68%	0.6	\$154,762
Kane county	KDOT Dauberman Rd Det 13-006	\$100,000	Wet detention	1.15	85%		15%	0.86	1.0	68%	0.7	\$148,033
Kane county	KDOT Dauberman Rd Det 13-007	\$150,000	Wet detention	2.4	85%		15%	0.86	2.1	68%	1.4	\$106,399
Kane county	KDOT Dauberman Rd Det 13-008	\$100,000	Wet detention	0.7	85%		15%	0.86	0.6	68%	0.4	\$243,198
Kane county	KDOT Dauberman Rd Det 13-009	\$100,000	Wet detention	0.8	85%		15%	0.86	0.7	68%	0.5	\$212,798
Kane county	KDOT Dauberman Rd Det 13-010	\$100,000	Wet detention	0.65	85%		15%	0.86	0.6	68%	0.4	\$261,905
Kane county	KDOT Dauberman Rd Det 13-011	\$100,000	Wet detention	0.65	85%		15%	0.86	0.6	68%	0.4	\$261,905
Kane county	KDOT Dauberman Rd Det 13-012	\$175,000	Wet detention	1.3	85%		15%	0.86	1.1	68%	0.8	\$229,167
Kane county	KDOT Dauberman Rd Det 13-013	\$100,000	Wet detention	1	85%		15%	0.86	0.9	68%	0.6	\$170,238
Kane county	KDOT Bunker Rd Det 11-003	\$100,000	Wet detention	1.1	85%		15%	0.86	1.0	68%	0.6	\$154,762
Kane county	KDOT Bunker Rd Det 11-004	\$100,000	Wet detention	1.4	85%		15%	0.86	1.2	68%	0.8	\$121,599
Kane county	KDOT Bunker Rd Det 11-005	\$250,000	Wet detention	4.1	85%		15%	0.86	3.5	68%	2.4	\$103,804

An electronic copy of this inventory is available upon request.

IV. SUMMARY OF ANTICIPATED ACTIVITIES DURING NEXT REPORTING CYCLE

- During the upcoming permit year, the Stormwater Management Program Plan will be updated to reflect the new requirements
- School presentations will continue in middle and high schools in Kane County
- It is anticipated that at least 2 presentations will be given and 3-5 tabling events will be attended
- A flood warning system pilot project will be completed on a road managed by KDOT. The system will consist of a sensor that will measure water depth on the road and trigger flashing LED signs when flooding over the road occurs.

V. RELIANCE ON ANOTHER GOVERNMENTAL ENTITY

Kane County is not relying on another governmental entity to satisfy NPDES permit obligations.

VI. CONSTRUCTION PROJECT LIST

The following Kane County Road construction projects were active during the permit year of March 2025—February 2026:

Section Number	Project Name	Project Cost
24-00514-01-WR	Randall Road at Rt. 72 Tree removal	\$83,092.00
24-00574-00-BT	LaFox Rd. Pedestrian Box Culvert Repair	\$260,071.50
23-00176-05-BR	Claude Hanson Bridge Repair	\$129,425.00
25-00000-01-GM	Asphalt Rejuvenator	\$656,772.20
25-00000-02-GM	Chip Seal	\$794,755.40
25-00000-03-GM	Paint Pavement Marking Patrol	\$833,331.60
25-00000-04-GM	Urethane Pavement Marking Patrol	\$467,900.76
24-00576-00-RS	2025 Kane County Resurfacing	\$6,248,000.00
24-00576-01-RS	2025 Kane County Resurfacing #2	\$4,634,773.18
22-00552-00-DR	Allen Road Culvert Replacement	\$324,672.93
22-00557-00-SP	2025 Recessed Pavement Markers	\$545,287.50
24-00575-00-DR	Keslinger Road Box Culvert Extension	\$193,746.89
14-00275-01-PV	Bunker Road Extension	\$11,552,391.01
24-00571-00-BR	Hughes over Blackberry Bridge Rehabilitation	\$397,312.40